



Sidney Gardens, TW8

£350,000

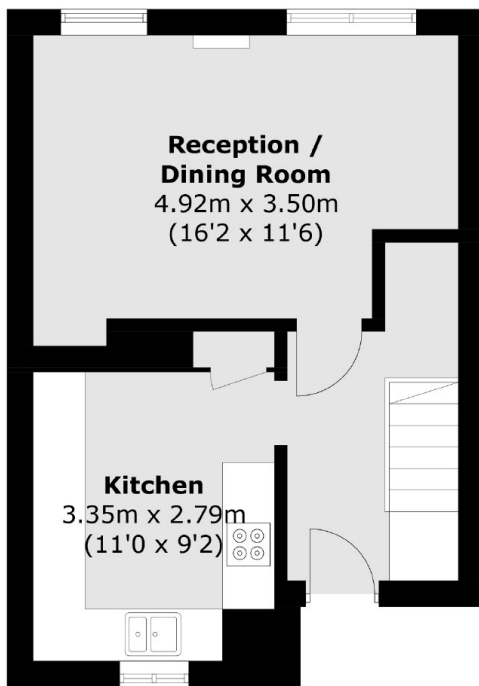
A two double bedroom split-level flat with private garden, and ground floor storage unit. The flat benefits from a recently extended long lease, in addition to having no onward chain.

Sidney Gardens is located approximately 150 metres from Brentford Station which offers fast trains into Waterloo. The property is under a mile to Northfields underground station.

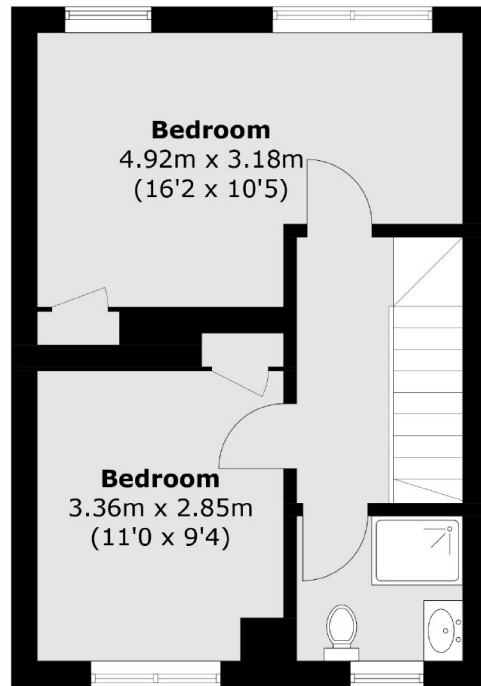
Features

- Two Double Bedrooms
- Split-Level
- Long Lease
- Private Garden
- Ground Floor Storage Unit
- Close To Amenities
- Close To Station
- No Onward Chain

Sidney Gardens, Brentford, TW8



Second Floor



Third Floor

Total area (approx.): 69.6 sq. m (749.1 sq. ft)