



Sidney Gardens, TW8

£375,000

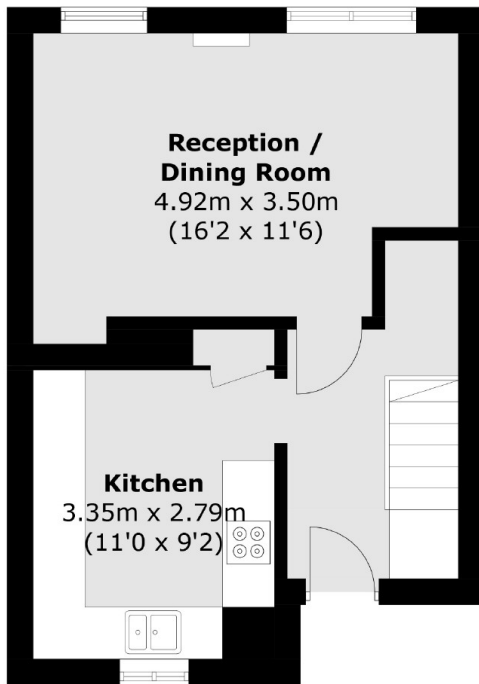
A two double bedroom split-level flat with private garden. Located in the immediate vicinity of Brentford Train Station whilst benefiting from no onward chain.

Sidney Gardens Is located approximately 150 metres from Brentford Station which offers fast trains into Waterloo. The property is under a mile to Northfields underground station.

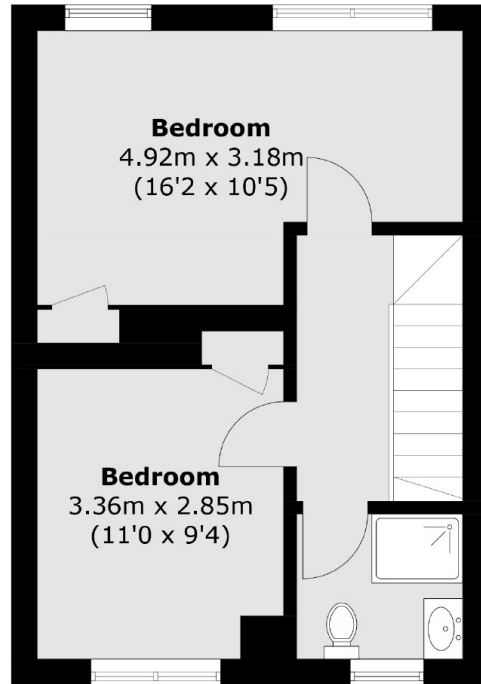
Features

- Two Double Bedrooms
- Split-Level
- Private Garden
- Close To Amenities
- Close To Station
- No Onward Chain

Sidney Gardens, Brentford, TW8



Second Floor



Third Floor

Total area (approx.): 69.6 sq. m (749.1 sq. ft)