

Great West Road, TW8 £550,000

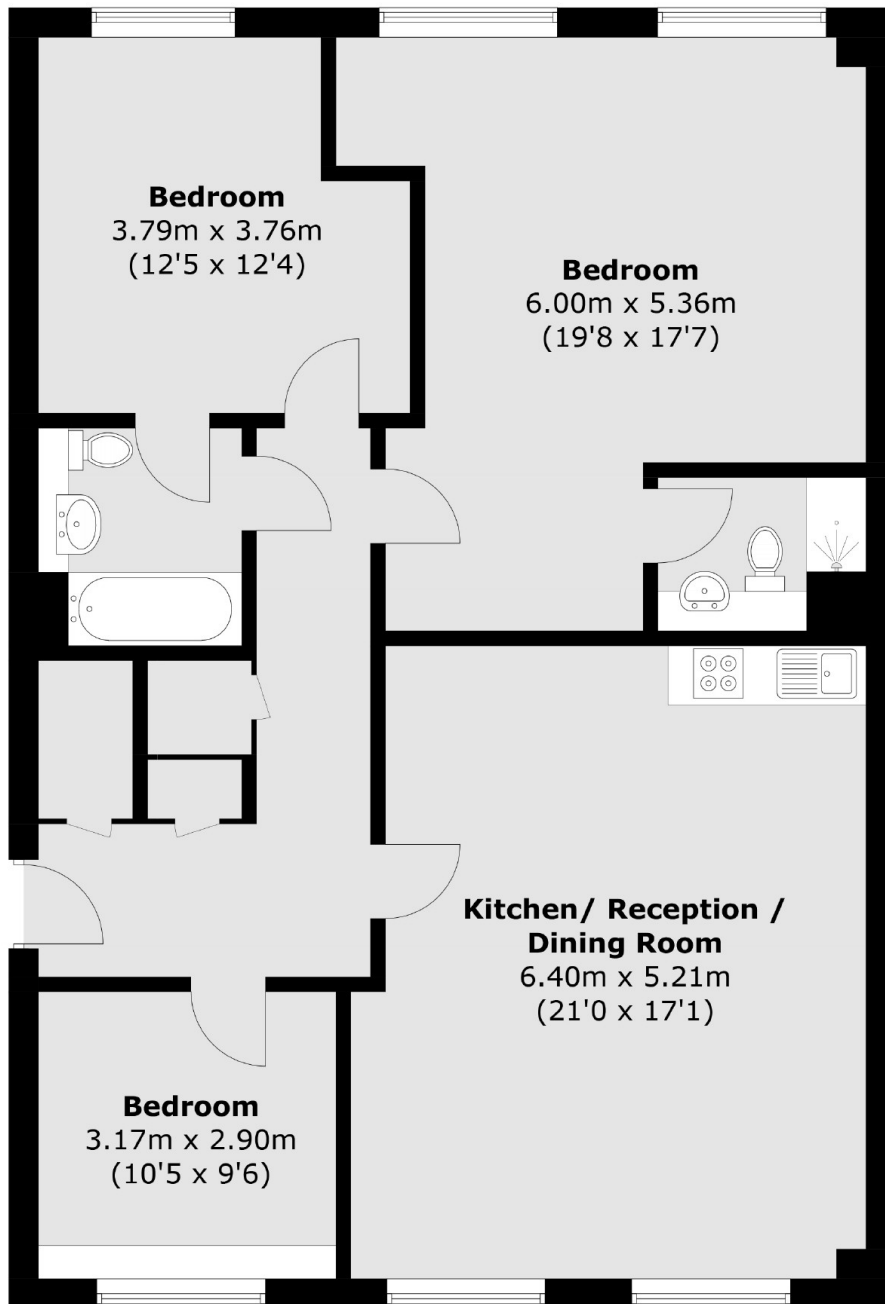
A well presented three double bedroom, two bathroom seventh floor apartment in the popular Great West Quarter Development. The property has open plan kitchen/reception room, concierge service, gym, secure underground parking and offered with no onward chain.

The Great West Quarter Development is located just half a mile from Brentford mainline station which has a frequent service to London Waterloo and it is also within a mile from South Ealing tube station and the amenities along Brentford High Street.

Features

- Three Bedrooms
- Two Bathrooms
- Lift Access
- Underground Parking
- 1,129 Sq/ft
- No Onward Chain

Great West Road,
Brentford, TW8



Total area (approx.): 104.9 sq. m (1129.1 sq. ft)