



## Capital Interchange Way, TW8 £475,000

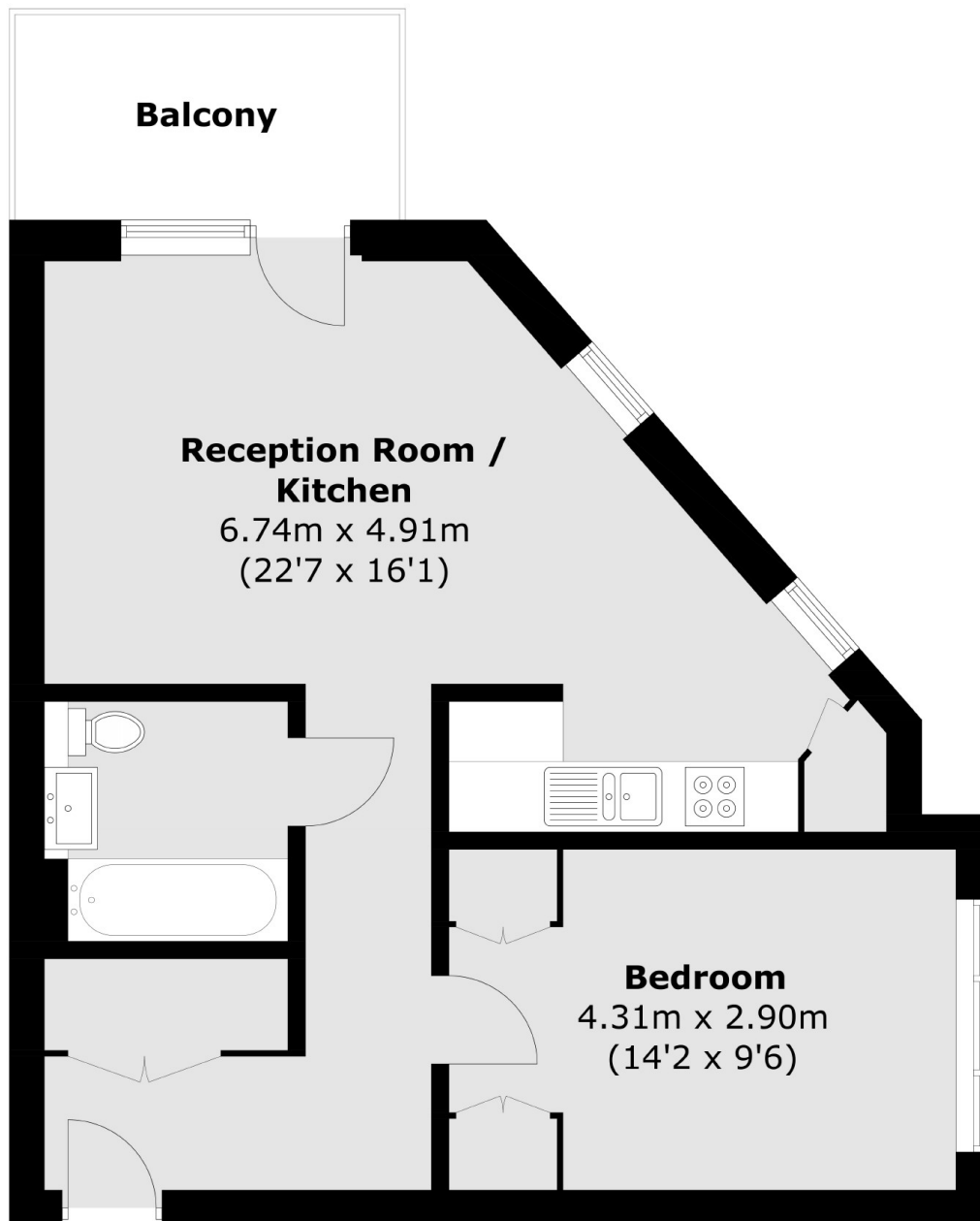
An immaculately presented one double bedroom, tenth floor apartment within this new development. With allocated parking, long lease, lift access, residents gym and cinema and balcony with unbeatable, direct views into Brentford Stadium and beyond.

Gunnersbury and Kew Bridge Stations are both close at hand and there are considerable green spaces within walking distance. There is also convenient access to the M4 and A4 for motorists.

### Features

- New Development
- One Double Bedroom
- Balcony
- Residents Gym & Cinema
- Parking
- No Onward Chain

Capital Interchange Way,  
Brentford, TW8



Total area (approx.): 51.7 sq. m (556.5 sq. ft)  
Balcony: 5.7 sq. m (61.3 sq. ft)