



Somerset Road, TW8

£350,000

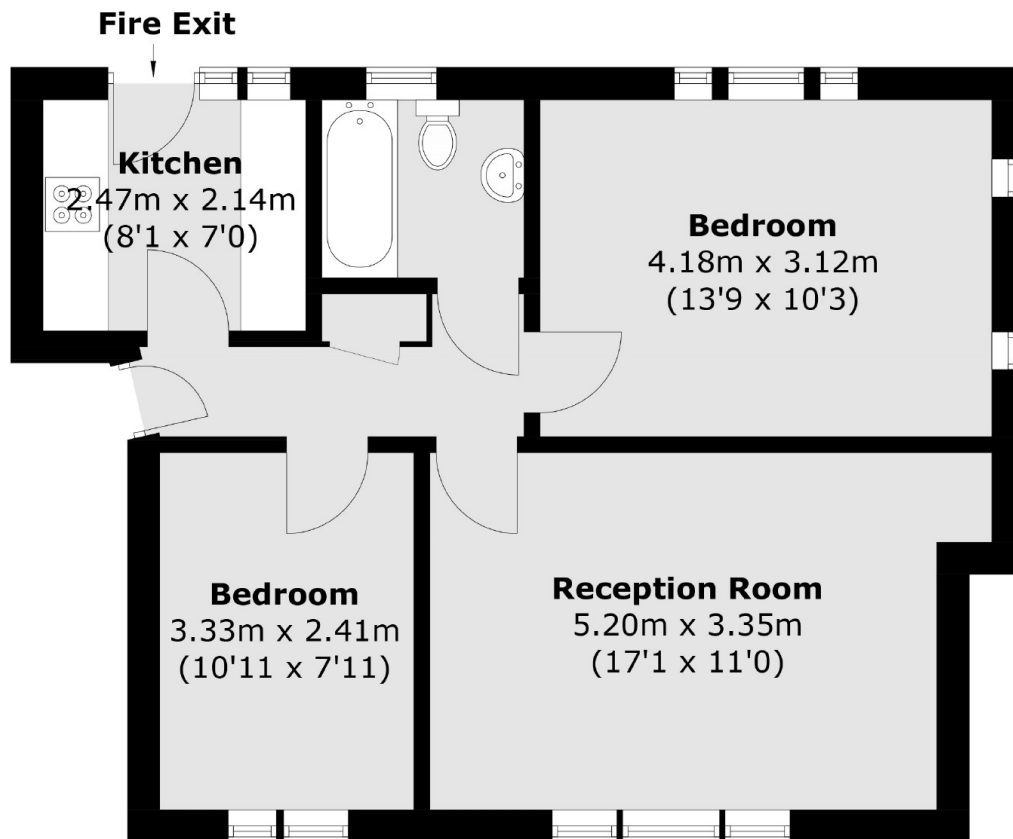
A recently redecorated and bright two double bedroom, top floor flat situated on the edge of the historic 'The Butts' conservation area. With long lease and no onward chain, perfect as a first-time buy or investment.

Brentford Mainline Station is 0.2 miles and local buses connect to Boston Manor, Ealing and Ealing Broadway Underground Stations. The A4/M4 gives access to Heathrow Airport to the west and central London.

Features

- Top Floor
- Two Double Bedrooms
- Long Lease
- Communal Garden
- Close To Transport
- No Onward Chain

Somerset Road, Brentford, TW8



Total area (approx.): 52 sq. m (559.7 sq. ft)