



Bayham Road, W4

£1,050,000

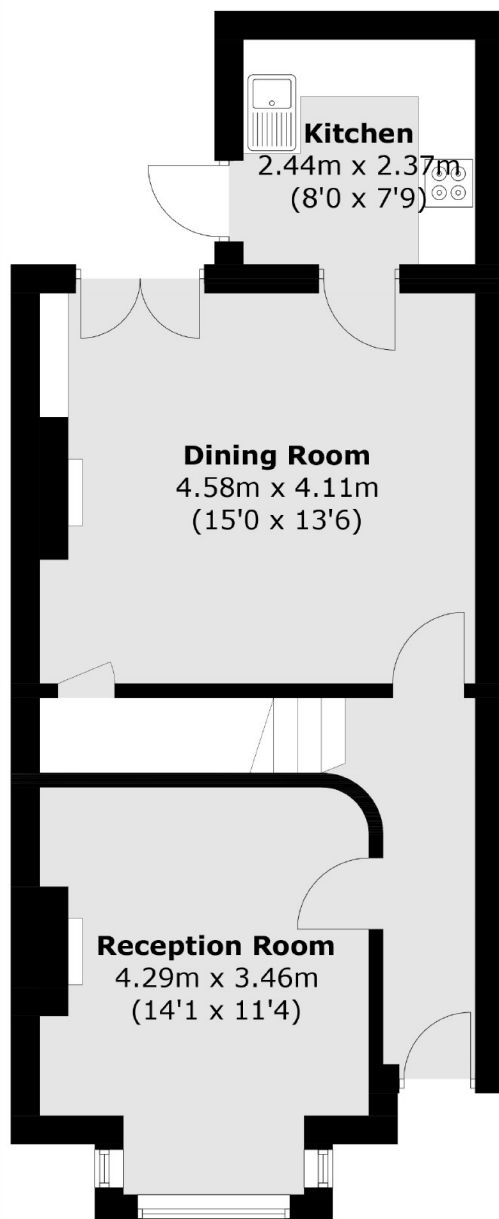
A rarely available two double bedroom, end of terrace Edwardian home situated within Bedford Park. The property offers the potential to extend into the loft and rear, subject to the usual planning consents as well as no onward chain.

Bayham Road is located within a mile of three underground stations including Chiswick Park and Turnham Green (Piccadilly and District). There are also many schools, parks and the restaurants and shops of Chiswick High Road close by.

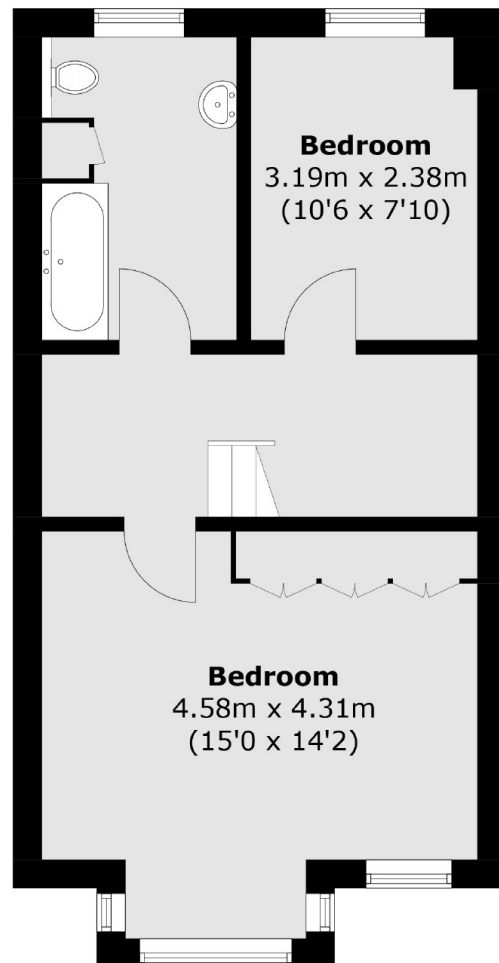
Features

- Two Double Bedrooms
- Two Receptions
- End Of Terrace
- Potential To Extend (STPP)
- Close To Transport
- No Onward Chain

Bayham Road,
London, W4



Ground Floor



First Floor

Total area (approx.): 88.8 sq. m (955.8 sq. ft)

Dexters

Chiswick
388 Chiswick High Road
London
W4 5TF
Sales
020 8995 4321

Energy Rating: TBC. We aim to make our particulars both accurate and reliable. However they are not guaranteed; nor do they form part of an offer or contract. If you require clarification on any points then please contact us, especially if you're traveling some distance to view. Please note that appliances and heating systems have not been tested and therefore no warranties can be given as to their good working order.

 **RICS** | Regulated
Estate Agent
and Letting Agent

[dexters.co.uk](https://www.dexters.co.uk)