



British Grove, W4

£2,423 Per week



British Grove, W4

This charming detached artist's studio is a true hidden gem. Behind its modest exterior, you'll discover an exceptional residence with a magnificent entertaining space at the back, highlighted by stunning twin vaulted ceilings.

This charming detached artist's studio is a true hidden gem. Behind its modest exterior, you'll discover an exceptional residence with a magnificent entertaining space at the back, highlighted by stunning twin vaulted ceilings.

British Grove is ideally located for the amenities and transport links of Chiswick and Hammersmith. It is situated near the historic St. Peter's Square and just moments from the River Thames.

British Grove is ideally located for the amenities and transport links of Chiswick and Hammersmith. It is situated near the historic St. Peter's Square and just moments from the River Thames.

Features

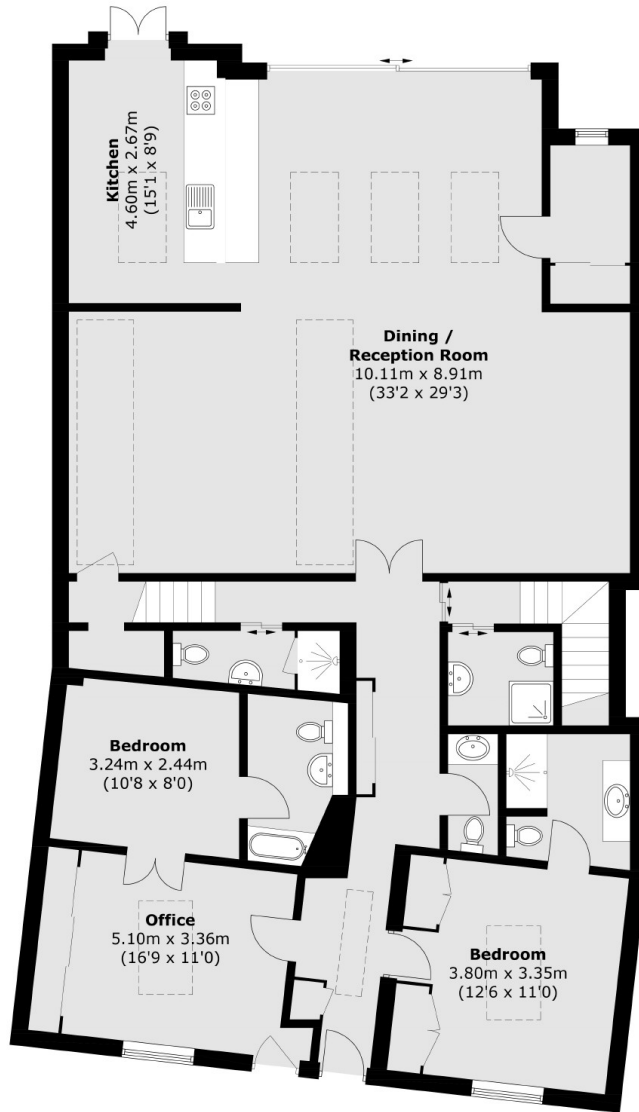
- Four Double Bedrooms
- Twin Vaulted Ceilings
- Wooden Flooring Throughout
- Underfloor Heating
- Four Stylish En-suites
- Great Location



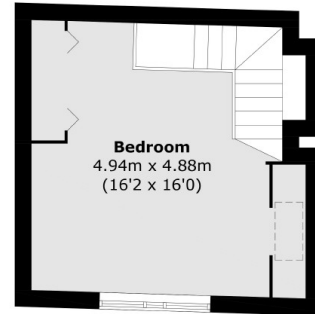




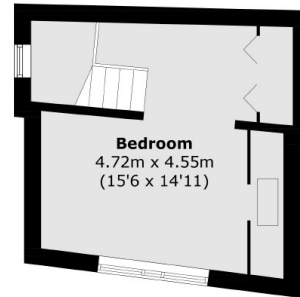
British Grove, London, W4



Ground Floor



First Floor - Right Side



First Floor - Left Side

Total area (approx.): 223.8 sq. m (2,408.9 sq. ft)