



## Watchfield Court, W4

£807 Per week

A three bedroom apartment in this popular purpose-built mansion block with a spacious reception room, a private balcony, communal gardens, built-in storage and heating and hot water included in the rent.

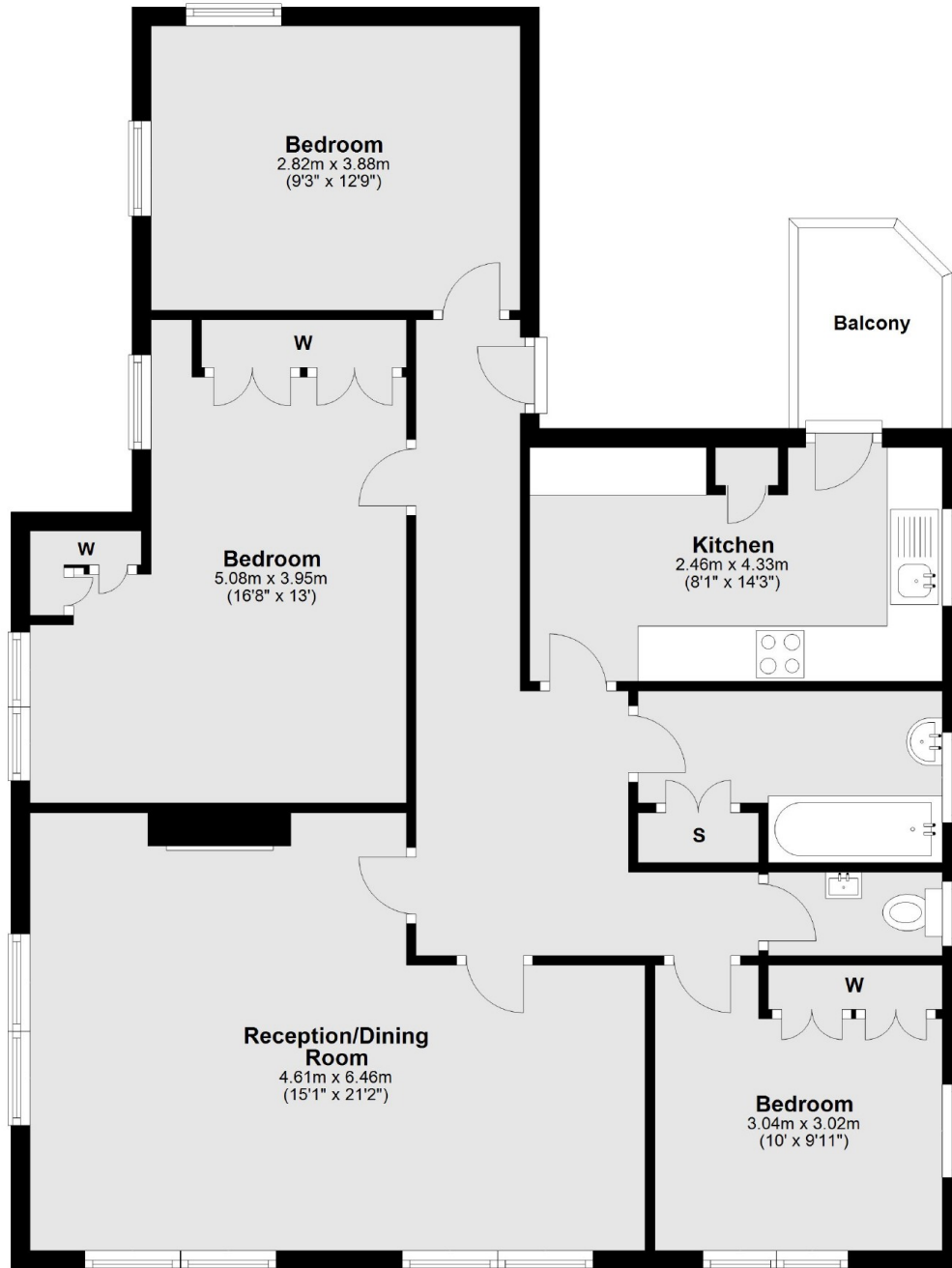
Sutton Court Road is within a quarter of a mile from Chiswick Park station and all the pubs, restaurants, bars and shops that Chiswick High Road has to offer.

### Features

- Three Bedrooms
- Communal Gardens
- Private Balcony
- Mansion Block
- Heating Included
- Hot Water Included

# Watchfield Court, London, W4

## First Floor



Main area: Approx. 97.0 sq. metres (1043.8 sq. feet)

Plus balconies, approx. 3.2 sq. metres (34.5 sq. feet)

# Dexters

Chiswick  
388 Chiswick High Road  
London  
W4 5TF

Lettings  
020 8995 5439

Energy Rating: D. We aim to make our particulars both accurate and reliable. However they are not guaranteed; nor do they form part of an offer or contract. If you require clarification on any points then please contact us, especially if you're traveling some distance to view. Please note that appliances and heating systems have not been tested and therefore no warranties can be given as to their good working order.

 **RICS** | Regulated  
Estate Agent  
and Letting Agent

dexters.co.uk