



## Goat Wharf, TW8

£499,950

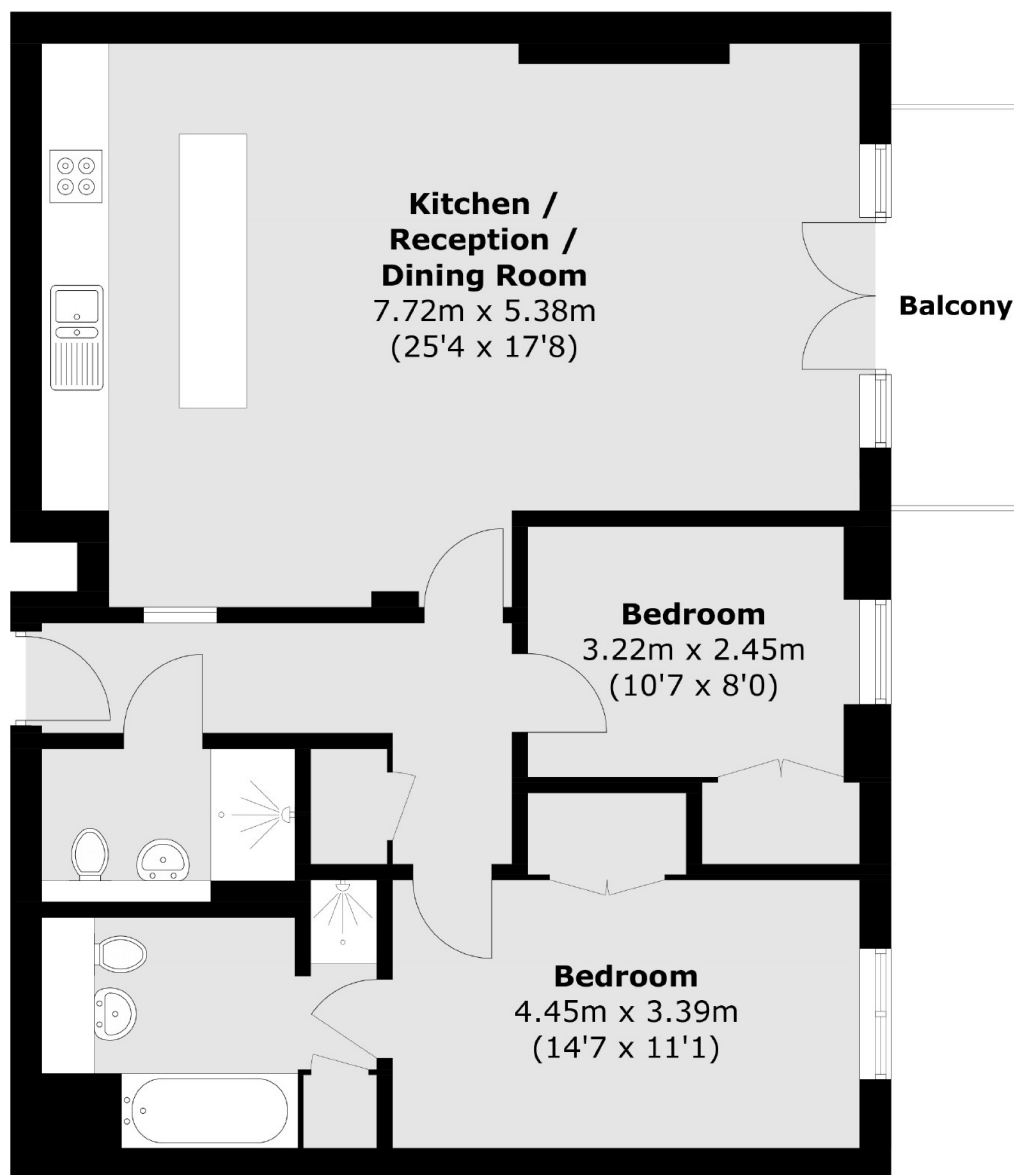
An immaculately presented two double bedroom, two bathroom apartment situated within this well sought-after development. With floor to ceiling windows, allocated parking, modern finish and offered with no onward chain.

Situated within the Ferry Quays waterside community, Goat Wharf is close to Brentford High Street. It is within half a mile from Brentford overground station and a short drive from the M4/A4 providing great access in and out of London.

### Features

- Two Double Bedrooms
- Two Bathrooms
- Balcony
- Lift Access
- Secure Underground Parking
- No Onward Chain

# Goat Wharf, Brentford, TW8



## Third Floor

Total area (approx.): 81.8 sq. m (880.5 sq. ft)  
Balcony: 4.5 sq. m (48.4 sq. ft)