



Spencer Road, W4 £1,600,000

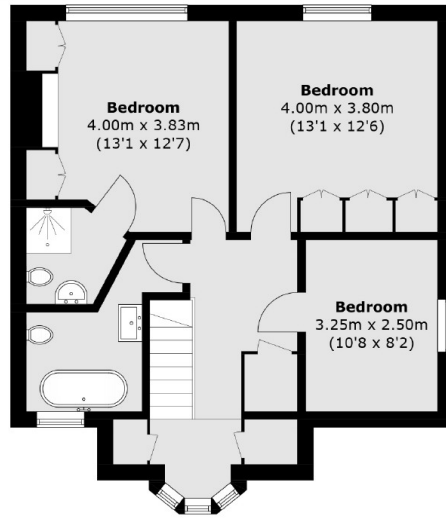
A unique three bedroom house which hosts unusual art deco features, designed by renowned local architect Richard Churchward in 1935. The property is a great family home located near to outstanding schools, shops and cafés and transport to central London. The house has off street parking, a spacious garden and a conservatory. Potential for extension (subject to planning). The property is offered chain free.

Spencer Road is located within Grove Park Conservation Area, Chiswick. Nearby is the outstanding Grove Park School. There are local bus links to Chiswick High Road nearby and Chiswick Station (GWR) which has fast trains to Waterloo is a moment's walk away. Chiswick House & Grounds and Strand On The Green are also a short walk away.

Features

- Grove Park School
- Off Street Parking
- Chain Free
- Unique Family House
- Close To Transport
- Large Garden w/ Conservatory

Spencer Road,
London, W4



First Floor



Ground Floor

Total area (approx.): 144.6 sq. m (1,556.4 sq. ft)