



Flanders Road, W4

£2,495,000

A five bedroom detached, family home which has been refurbished by the existing owners with a South East facing garden, games room / media room, private off street parking and being offered to the market chain free.

The ground floor consists of a large entrance hall, leading to a separate reception room with a large bay window and original features.

There are also excellent transport links with Turnham Green and Stamford Brook stations close by featuring the tube and road links to Heathrow Airport. Local schools enjoy an excellent reputation, both private and state. Flanders Road is situated in Bedford Park, ideally for the excellent shops, boutiques and restaurants of Turnham Green Terrace and Chiswick High Road.

Features

- Five Bedrooms
- Five Bathrooms
- Detached
- Off Street Parking
- South East Facing Garden & Terrace
- Refurbished



Flanders Road, W4

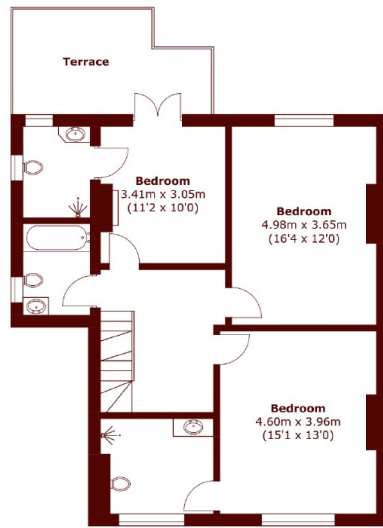
At the rear of the house, there is a large open-plan kitchen/ dining room with direct access to the south East facing garden. A family utility room along with a study area and a working fire.

The first floor consists of three well-proportioned double bedrooms, two of which have direct access to their own en suites. There is also a three piece family bathroom. The second floor benefits from two large double bedrooms, a separate family shower room as well as access to ample eaves and loft storage.

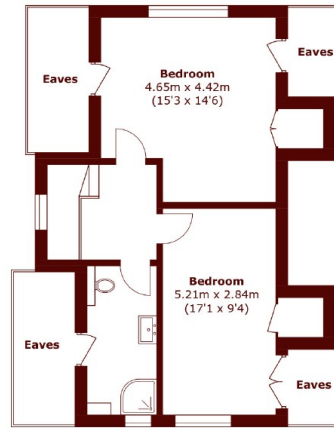
Flanders Road is located in the highly desirable Bedford Park area and is conveniently positioned for the sophisticated array of high street shops, cafes and restaurants that Chiswick has to offer.



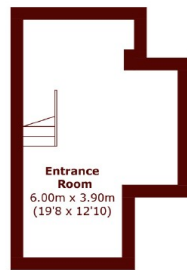
Flanders Road, London, W4



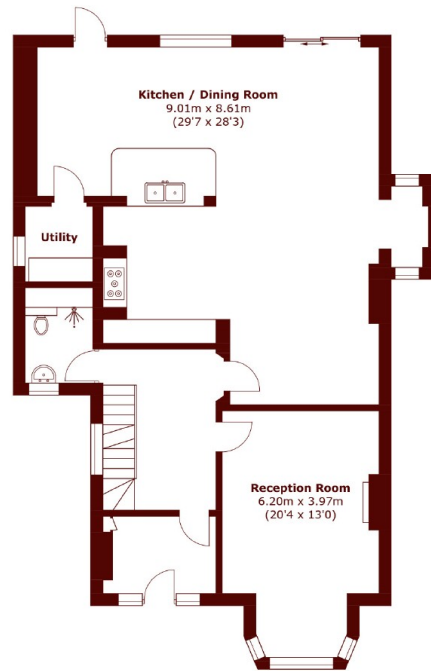
First Floor



Second Floor



Basement



Ground Floor

Total area (approx.): 265.7 sq. m (2,859.8 sq. ft)
(Including Basement / Excluding Eaves)
Terrace: 11.7 sq. m (125.9 sq. ft)