



## John Bull Place, W4

£1,250,000

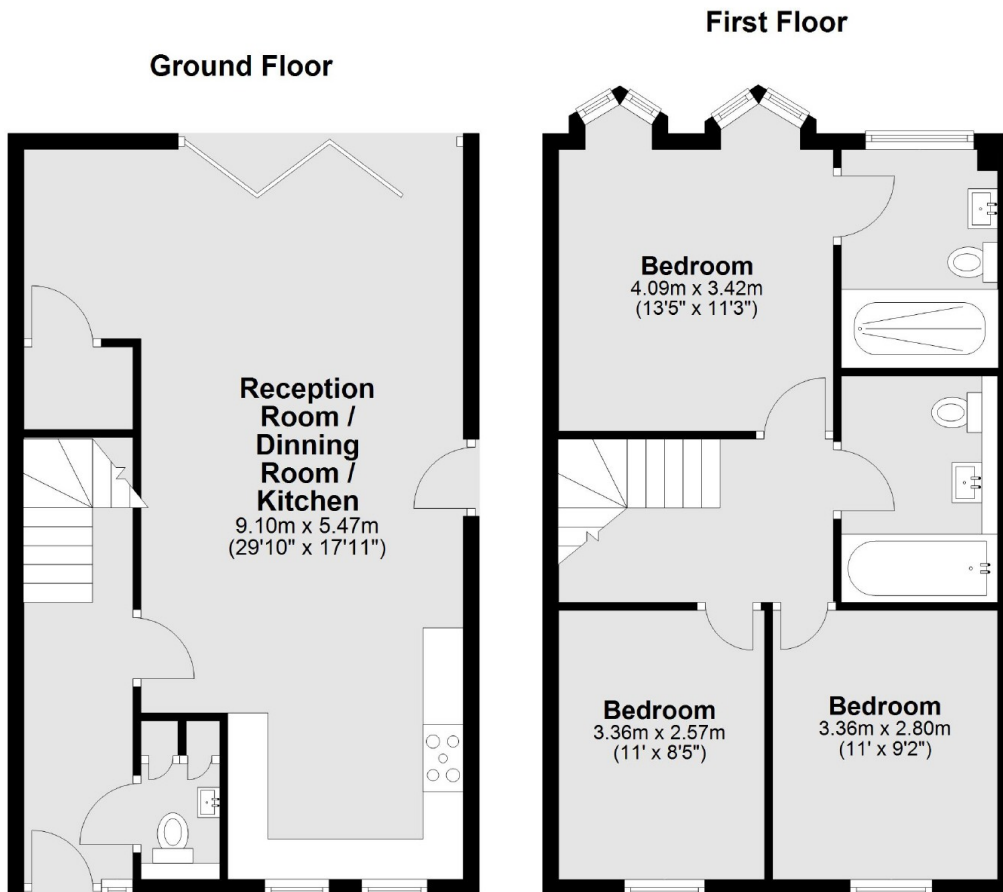
A newly built three double bedroom, two bathroom house located in prime central Chiswick. With large open-plan living and entertaining space, off-street parking and offered with no onward chain. We have two houses available to buy next door to each other.

John Bull Place is located within a few minutes walk of Gunnersbury Underground Station (District & Overground) as well as local bus links towards the shops and restaurants of Chiswick High Road. Kew Bridge Station is also near by providing fast access to central London. Local schools, green spaces and the river are also close by.

### Features

- Modern Build
- Three Double Bedrooms
- Two Bathrooms
- Off-Street Parking
- No Onward Chain
- Close To Transport

# John Bull Place, London, W4



Total area: approx. 100.3 sq. metres (1079.9 sq. feet)