



Bridge Street, W4

£911 Per week

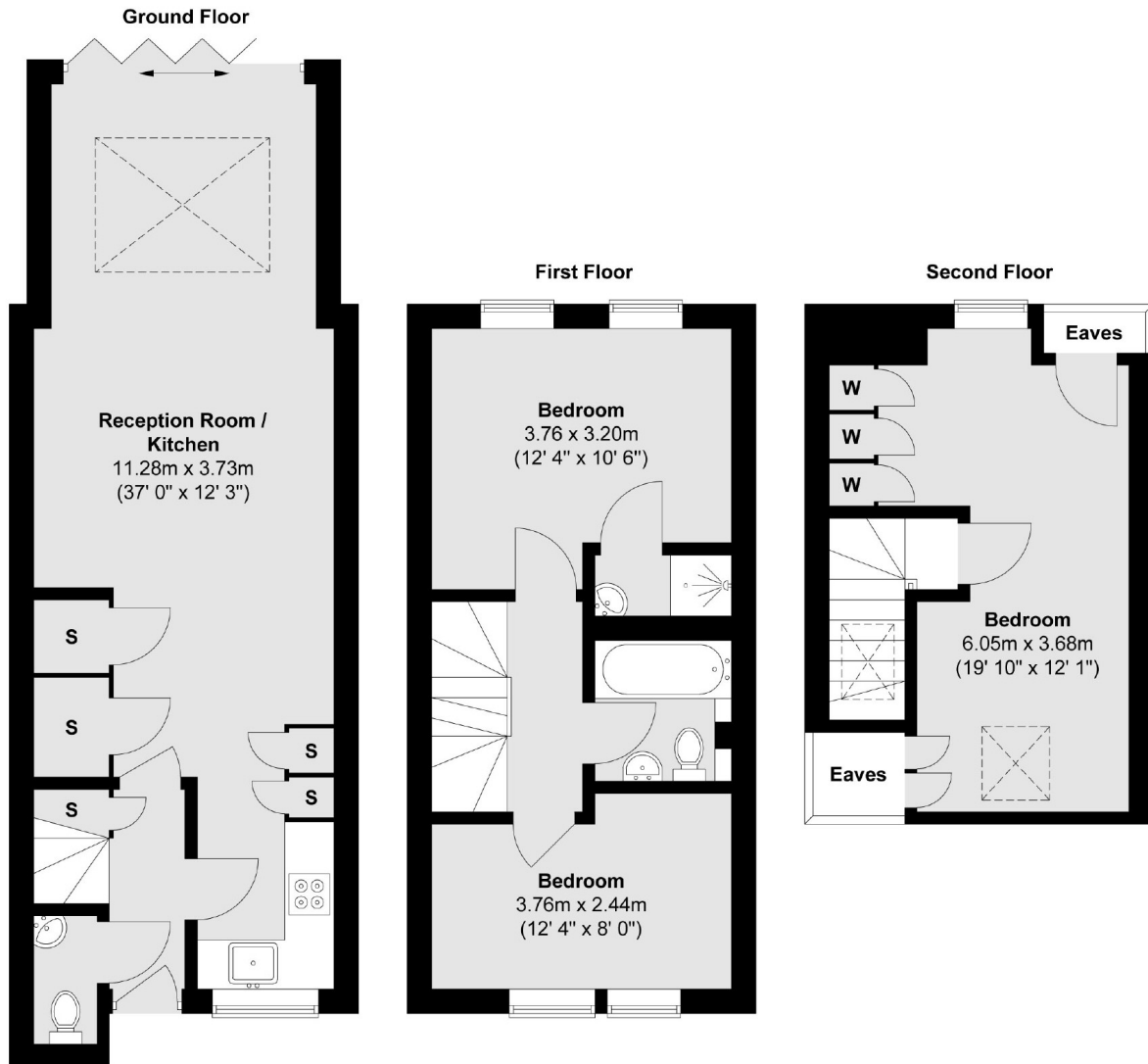
A well-presented three bedroom terraced house situated in a popular development close to Chiswick High Road with a private garden and off-street parking.

Located close to all the amenities on Chiswick High Road and under half a mile from Chiswick Park underground station.

Features

- Private Garden
- Off-Street Parking
- Three Bedrooms
- Terraced House
- Transport Links
- Central Location

Bridge Street, London, W4



Total area (approx.) : 93.3 sq. m (1004 sq. ft)