



Kingswood Road, W4

£530 Per week

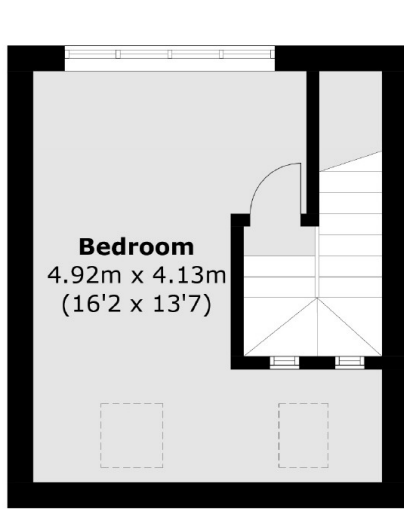
A split-level apartment in excellent condition throughout. The property has an open plan reception room, a modern kitchen, two bedrooms and one bathroom.

Located under half a mile from South Acton and Chiswick Park stations and just over half a mile from Chiswick High Road, which has various shops, restaurants and bars.

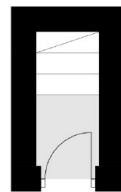
Features

- Split-Level
- Two Bedrooms
- One Bathroom
- Transport Links
- Modern Kitchen
- Open Plan

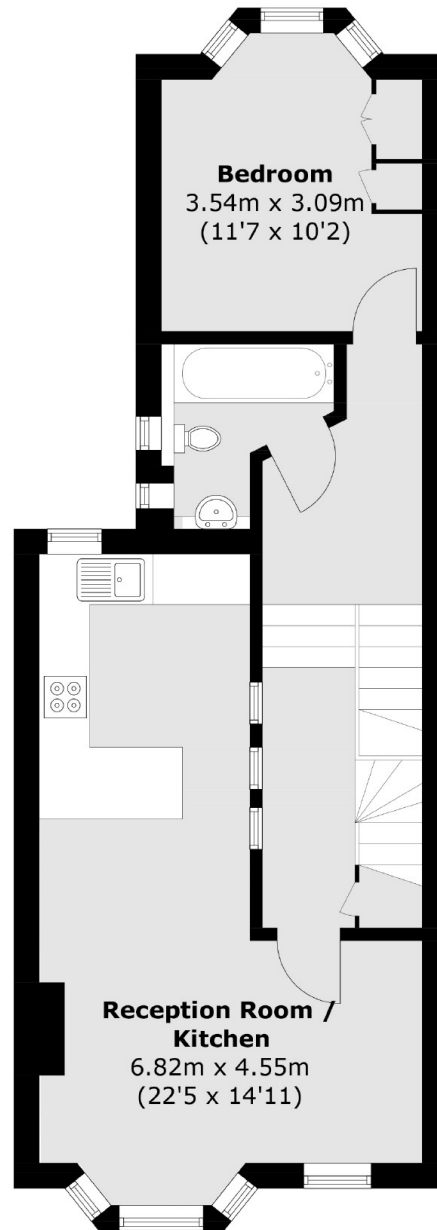
Kingswood Road, London, W4



Second Floor



Ground Floor



First Floor

Total area (approx.): 73.6 sq. m (792.2 sq. ft)