



Chiswick Village, W4

£507 Per week

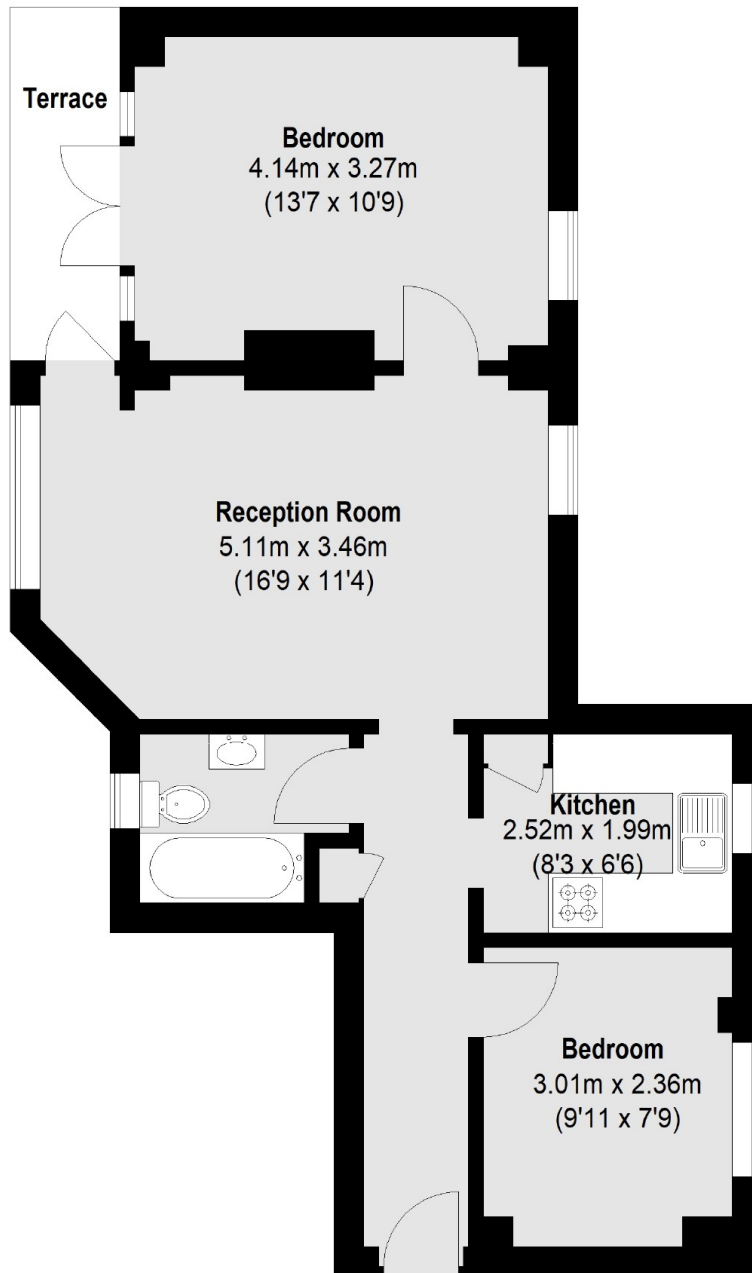
A well presented two double bedroom property located in a popular mansion Chiswick Village. The rent also includes heating, hot water and parking. The apartment is in good condition and consists of two good sized double bedrooms, a bright reception room, fully fitted kitchen and bathroom with shower over bath.

This apartment is located half of a mile away from Gunnersbury underground Station, Kew bridge station and the M4/A4 providing excellent access into and out of town. Also located close to the highly regarded schools, local amenities and the River Thames.

Features

- Two Double Bedrooms
- Ground Floor Flat
- Balcony
- Parking Included
- Hot Water & Heating Included
- Central Location

Chiswick Village, London, W4



Total area (approx.): 54.87 sq. m (591 Sq. ft)
Terrace: 3.90 sq. m (42 Sq. ft)