



## Ellesmere Road, W4 £650,000

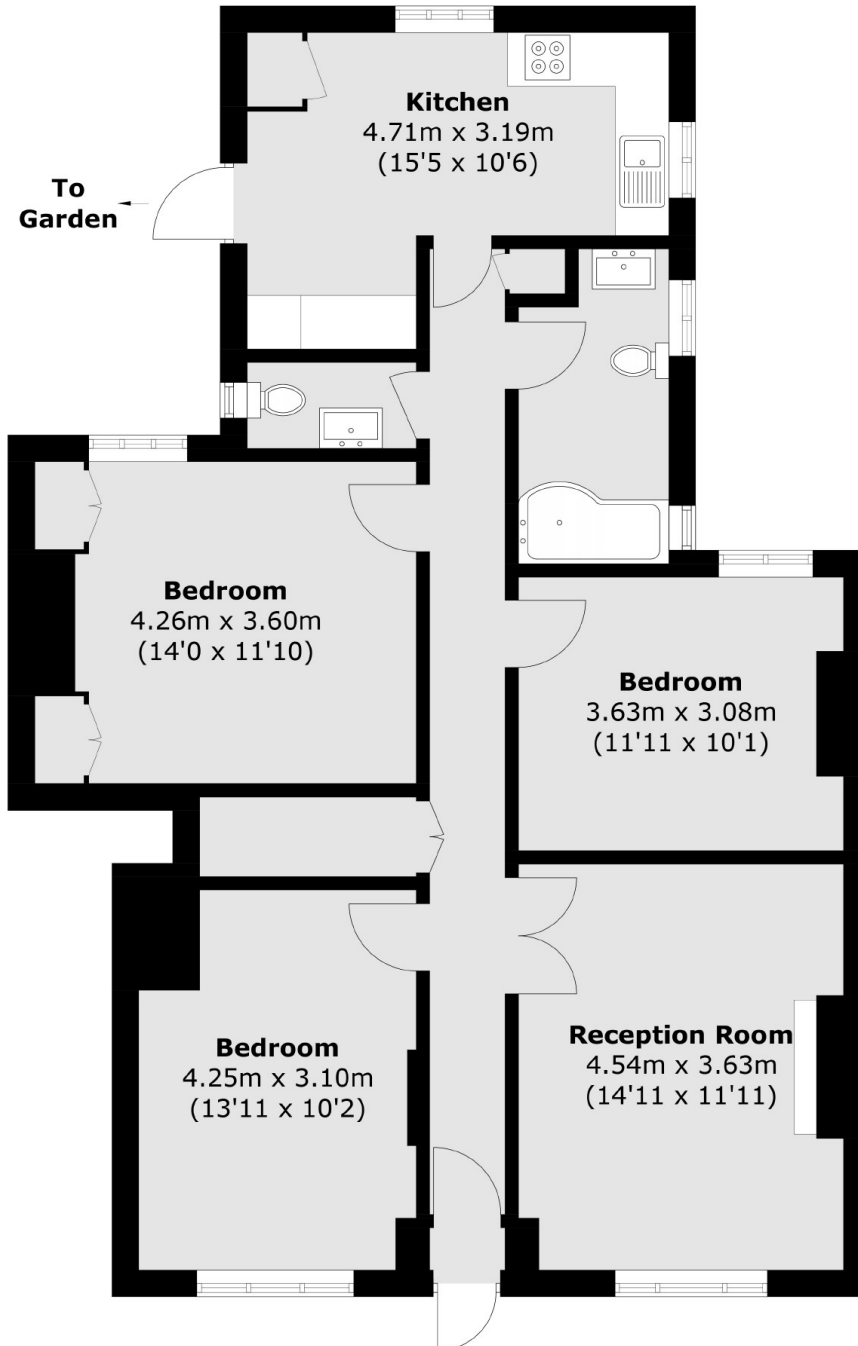
At over 1,000 sq/ft, a large three bedroom ground floor garden flat. With its own entrance, share of freehold, close to transport and large private garden with potential to extend (STPP).

Located within a few minutes walk of Chiswick High Road's shops, cafes and restaurants. Transport links include Turnham Green and Chiswick Park stations, local bus routes and the A4/M4 for routes in and out of London

### Features

- Maisonette
- Three Double Bedrooms
- Eat-In Kitchen
- Share Of Freehold
- Potential To Extend (STPP)
- Close To Transport

Ellesmere Road,  
London, W4



Total area (approx.): 94.1 sq. m (1012.9 sq. ft)

**Dexters**

Chiswick  
388 Chiswick High Road  
London  
W4 5TF  
Sales  
020 8995 4321

Energy Rating: D. We aim to make our particulars both accurate and reliable. However they are not guaranteed; nor do they form part of an offer or contract. If you require clarification on any points then please contact us, especially if you're traveling some distance to view. Please note that appliances and heating systems have not been tested and therefore no warranties can be given as to their good working order.

 **RICS** | Regulated  
Estate Agent  
and Letting Agent

[dexters.co.uk](http://dexters.co.uk)