



Gunnersbury Mews, W4

£1,800,000

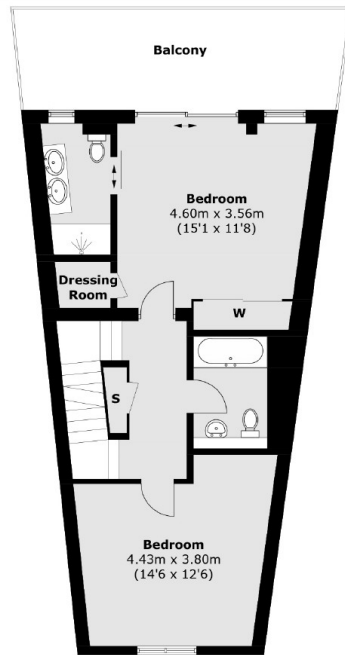
An immaculate five bedroom new build town house. This house is located within a gated community which offers secure underground parking and garage space in the basement. Inside the house, the ground floor has a separate high spec kitchen, a WC and a large reception room that leads out into a generous garden. There are five double bedrooms and four bathrooms. The principle bedroom enjoys an en-suite and a West facing terrace.

Gunnersbury Mews is located within 2 minutes walk to Gunnersbury Underground Station (District & Overground) as well as local bus links towards the shops and restaurants of Chiswick High Road. Kew Bridge Station is also near by providing fast access to central London. Local schools, green spaces and the river are also close.

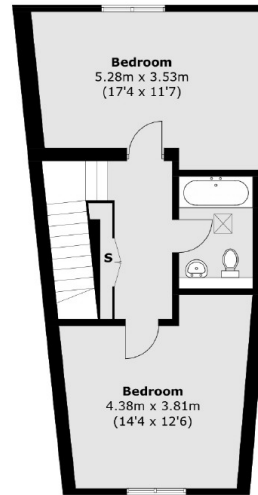
Features

- Gated Development
- Secure Parking & Garage
- Five Bedrooms
- Private Garden & Terrace
- Close To Transport
- Chain Free

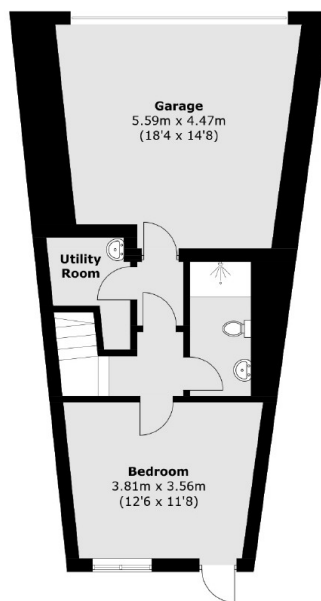
Gunnersbury Mews, London, W4



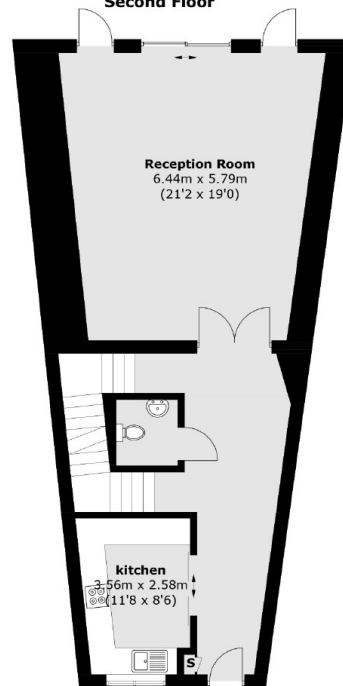
First Floor



Second Floor



Basement



Ground Floor

Total area (approx.): 233.8 sq. m (2517.0 sq. ft)
Balcony area (approx.): 16.9 sq. m (182.0 sq. ft)