

Thorney Hedge Road, W4

£715 Per week

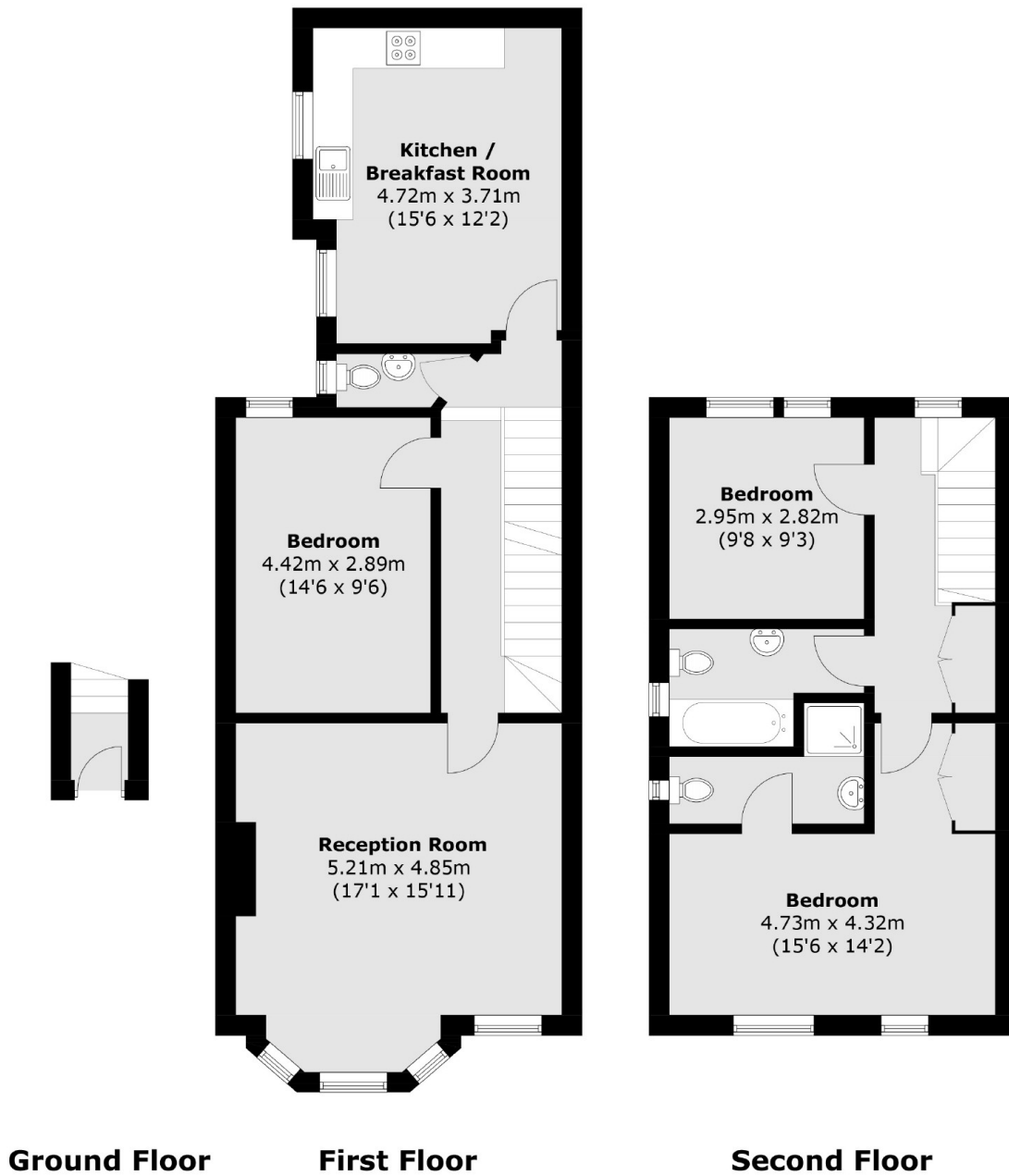
A three double bedroom split level apartment within a period conversion with a large reception room, separate kitchen and two bathrooms.

Thorney Hedge Road is ideally located for the amenities of Chiswick High Road and Gunnersbury tube station which are both less than a quarter of a mile away.

Features

Split Level
Conversion Flat
Three Double Bedrooms
Two Bathrooms
Separate Kitchen
Central Location

Thorney Hedge Road,
London, W4



Total area (approx.): 110.2 sq. m (1,186.1 sq. ft)