



Clarence Road, W4

£507 Per calendar month

A first floor maisonette with two double bedroom, large reception room and a separate kitchen. The property has been recently-refurbished and is excellent condition.

Clarence Road is situated just off Chiswick High Road offering access to the area's famed amenities, Gunnersbury tube and Brentford railway station.

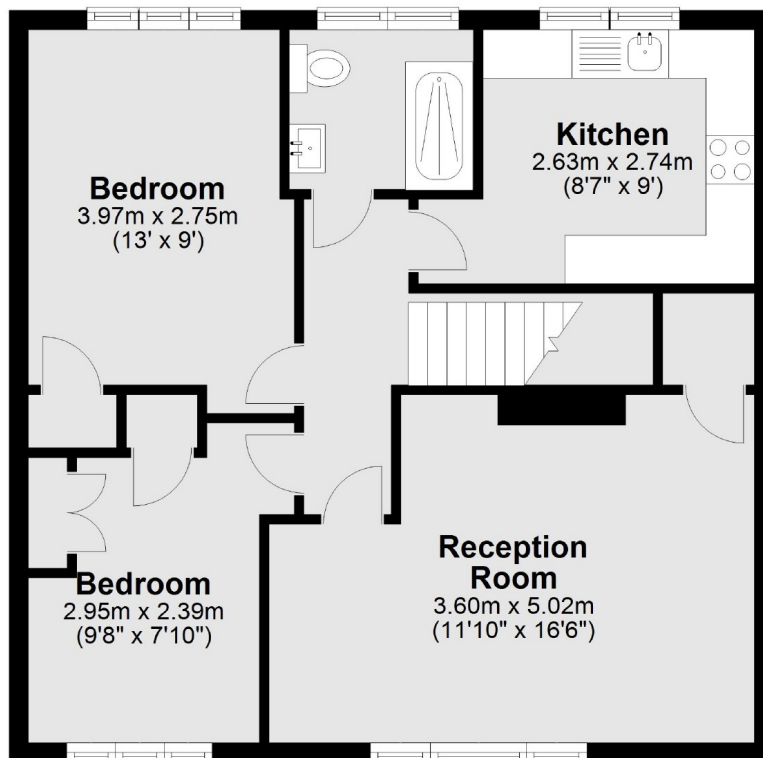
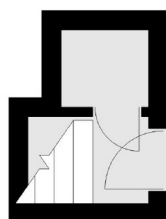
Features

- First Floor Maisonette
- Two Double Bedrooms
- Separate Kitchen
- Large Reception Room
- Recently Refurbished
- Great Location

Clarence Road, London, W4

First Floor

Ground Floor



Total area: approx. 57.3 sq. metres (616.4 sq. feet)