



Airedale Avenue, W4

£3,000,000

A handsome seven bedroom, six bathroom Edwardian family home on one of Chiswick's most premium roads.

Airedale Avenue is located just off of Chiswick High Road. You would be a short walk to both Stamford Brook and Turnham Green tube stations which are serviced by the Piccadilly and District lines. Additionally, the property's location allows for a short walk to the River Thames, the Hogarth Health Club and High Road House - a Soho House Club venue.

Features

- Edwardian Home
- Seven Double Bedrooms
- Six Bathrooms
- Semi-Detached
- Large Basement Level
- West Facing Garden



Airedale Avenue, W4

The ground floor of the property has a separate reception room to the front with an exceptional bay window and spacious open-plan kitchen/living and dining to the rear, leading through to the west-facing garden. There is also a large utility room and WC.

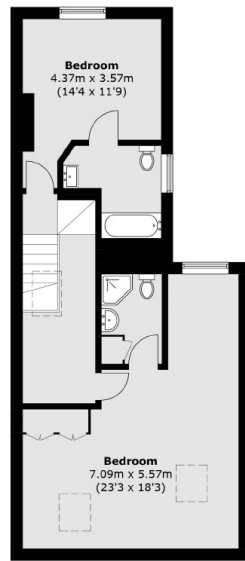
The basement has been cleverly converted into extensive living space with exceptionally high ceilings, here you will find open plan living and dining area leading onto a patio and two further double bedrooms and two bathrooms.

To the first floor there is the primary bedroom with built-in wardrobes, bay window and en-suite and two further large double bedrooms served by a family bathroom.

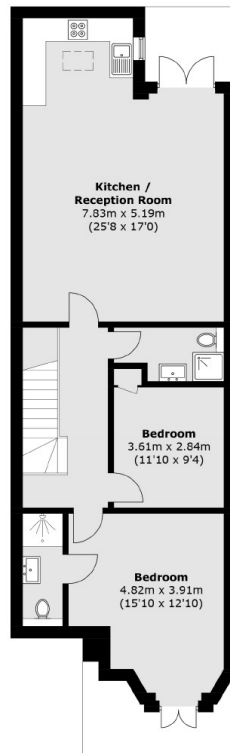
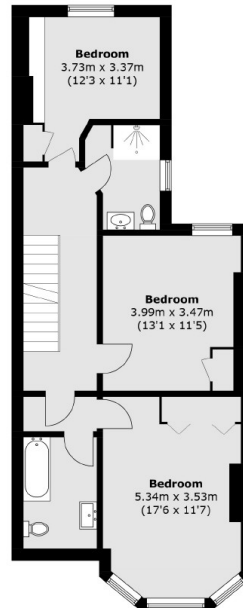
The second floor hosts two further large bedrooms, both with en-suite bathrooms.



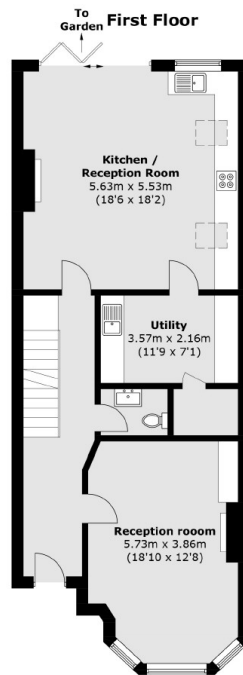
Airedale Avenue, London, W4



Second Floor



Lower Ground Floor



Ground Floor

Total area (approx.): 291.8 sq. m (3,140.9 sq. ft)