



Weston Road, W4

£657 Per week

A well-presented family home arranged over two floors with a double reception room, an eat-in kitchen, three double bedrooms and a west facing patio garden.

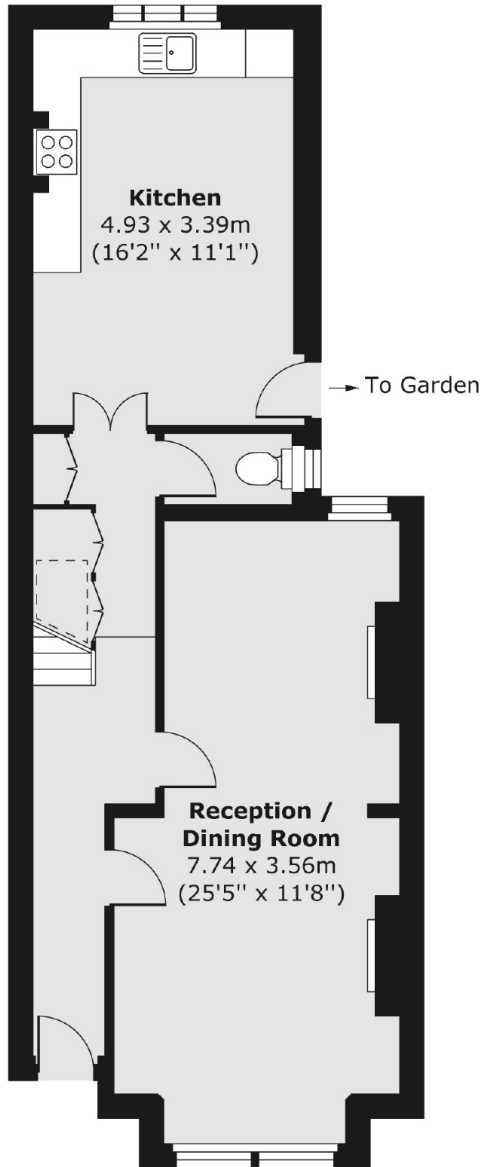
Weston Road is located under half a mile from both Chiswick Park and South Acton stations as well as the shops and amenities of Chiswick High Road.

Features

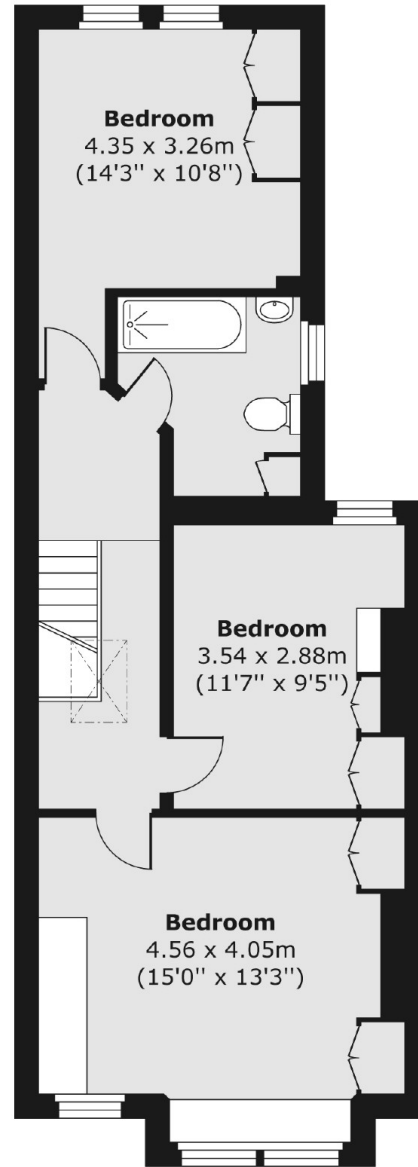
Double Reception
Three Bedrooms
Patio Garden
Period Features
Ample Storage
Transport Links

Weston Road, London, W4

Ground Floor



First Floor



Total area (approx.) 107.36 sq. m (1,156 sq. ft)