



## Huntingdon Gardens, W4

£1,650,000

**Dexters**



## Huntingdon Gardens, W4

A modern end of terrace townhouse set over four floors on this highly sought-after private road in Grove Park. There are five double bedrooms, three bathrooms as well as a ground floor WC and off-street parking.

The ground floor of the property has spacious open-plan kitchen/living with modern appliances throughout, leading through to the south-facing garden. There is also a large utility room and WC. The basement has been cleverly converted into further living space and home gym.

On the first floor there is one family bathroom and three double bedrooms, the largest of which at the front could also serve as a fantastic reception room with balcony. The second floor provides a further two large bedrooms, two bathrooms and plenty of storage. To the front of the house there is off-street parking.

Huntingdon Gardens is located within an exclusive award winning private development in the area of Chiswick known as Grove Park. The area offers a wide selection of amenities including Chiswick House & Gardens, local restaurants, sports & health clubs and excellent transport connections into and out of town including Chiswick Station.

### Features

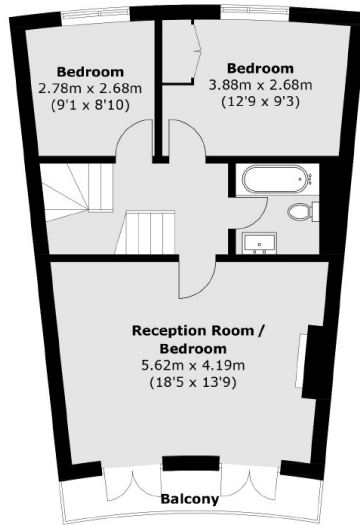
- Five Double Bedrooms
- Three Bathrooms
- End Of Terrace
- Private Road
- Converted Basement
- Off-Street Parking



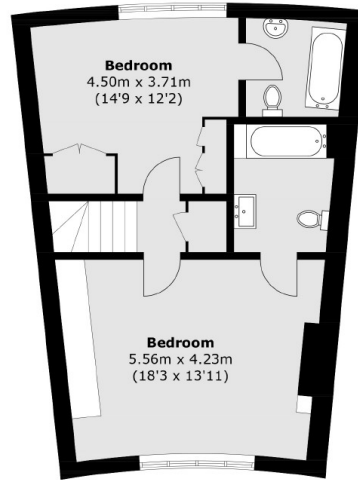




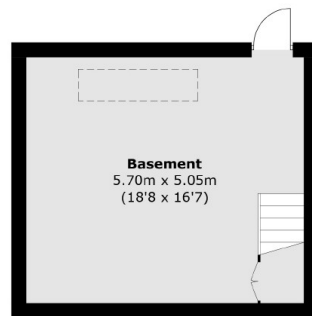
# Huntingdon Gardens, London, W4



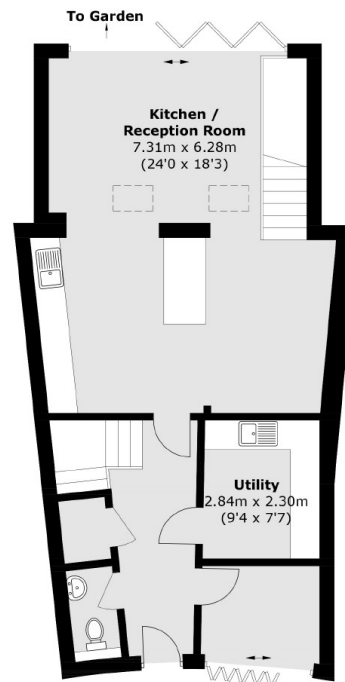
**First Floor**



**Second Floor**



**Basement**



**Ground Floor**

Total area (approx.): 200.0 sq. m (2,152.7 sq. ft)  
(Including Basement)

Balcony: 4.4 sq. m (47.4 sq. ft)