



Compton Crescent, W4

£980 Per week

Dexters



Compton Crescent, W4

A stunning family home with a double reception with wood flooring, four bedrooms and a private south east facing patio garden.

This beautiful family house is full of character and space. It benefits from a south east facing garden and plenty of storage.

The ground floor has a spacious kitchen at the back and a double reception room to the front of the property with wood flooring throughout and two beautiful feature fireplaces.

The first floor is comprised of three double bedrooms and a family bathroom. The second floor boasts another large double bedroom with an en suite bathroom, and benefits from ample storage in the eaves.

Compton Crescent is located close to Chiswick overground station, which has a frequent service into London. It also has easy access to the A4/M4 for motorists, and is within a mile from Chiswick Park tube station, which has the District Line.

Features

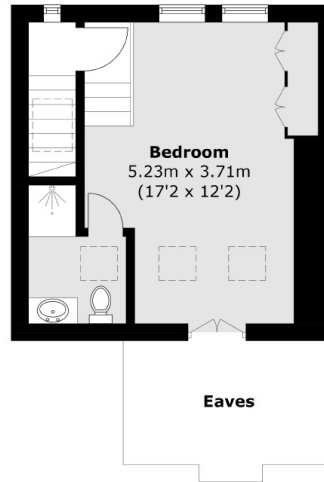
- Period House
- Four Bedrooms
- Two Bathrooms
- Double Reception Room
- Over 1,500 Sq. Ft
- Private Garden



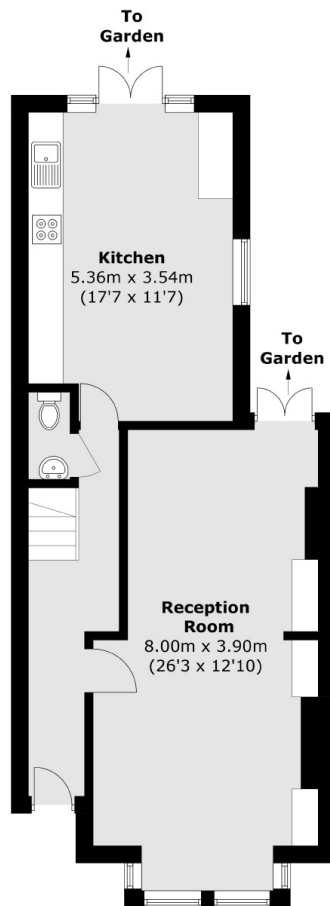




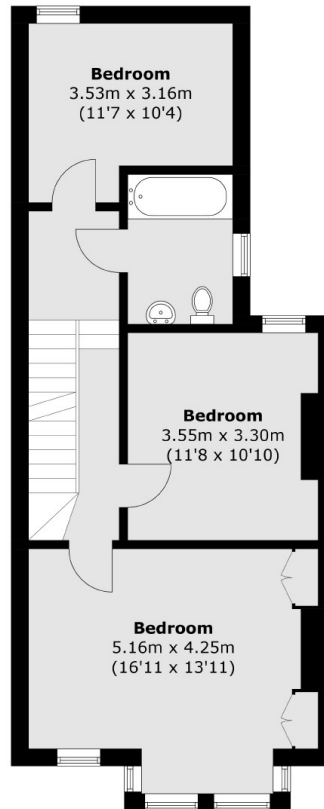
Compton Crescent, London, W4



Second Floor



Ground Floor



First Floor

Total area (approx.): 139.0 sq. m (1,496.1 sq. ft)
(Excluding Eaves)