



Rothschild Road, W4

£876 Per week

Situated on a very quiet road in central Chiswick is this beautiful three double bedroom detached family house with an open plan living area and a private garden.

Located half a mile from both Chiswick Park tube station and the various bars, restaurant and shops along Chiswick High Road.

Features

- Three Bedrooms
- Open Plan Living
- Private Garden
- Wood Flooring
- Central Chiswick
- Transport Links



Rothschild Road, W4

Downstairs has a large front facing reception room with wood flooring and a fireplace leading through to an open plan kitchen area with plenty of dining space.

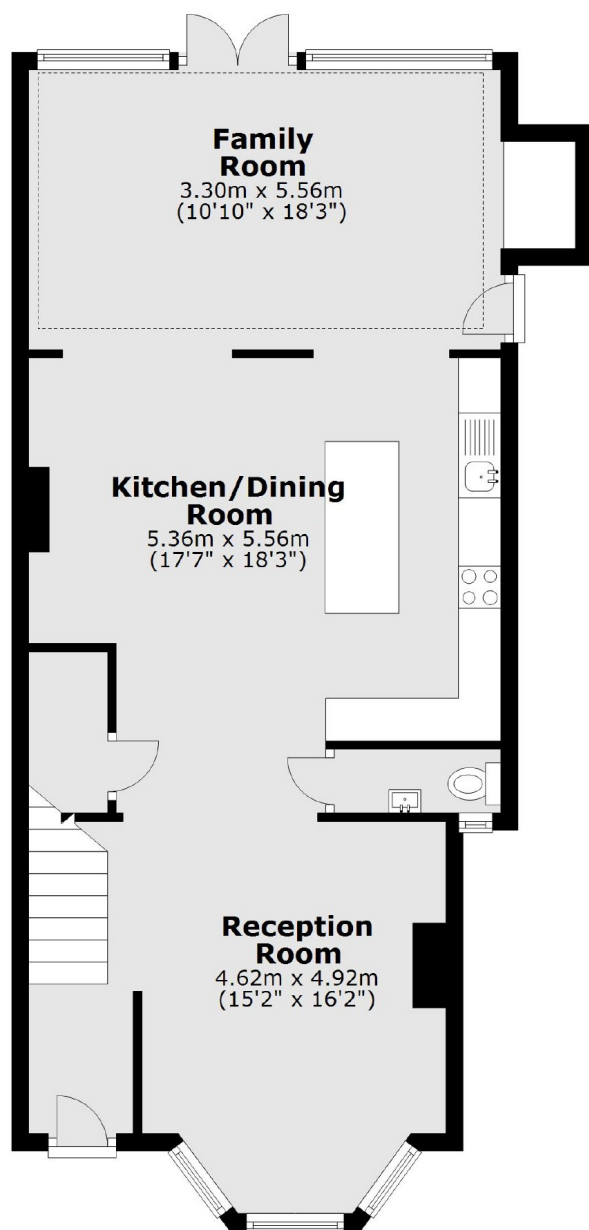
Further to this there is a large conservatory area with direct access to a beautifully presented landscaped garden and a further guest bathroom.

Upstairs the property has a stunning front facing master bedroom with built-in wardrobes and an en suite shower room, two further double bedrooms and master bathroom.

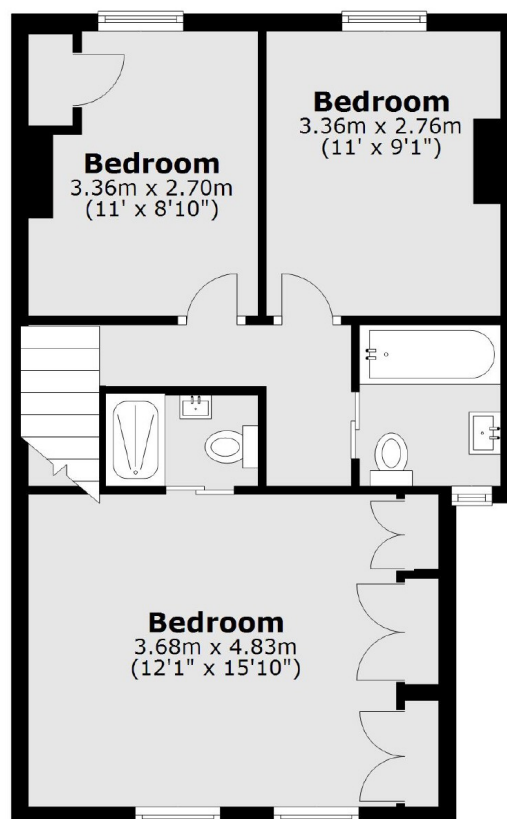


Rothschild Road, London, W4

Ground Floor



First Floor



Total area: approx. 118.6 sq. metres (1276.2 sq. feet)