



## Point Wharf Lane, TW8

£375,000

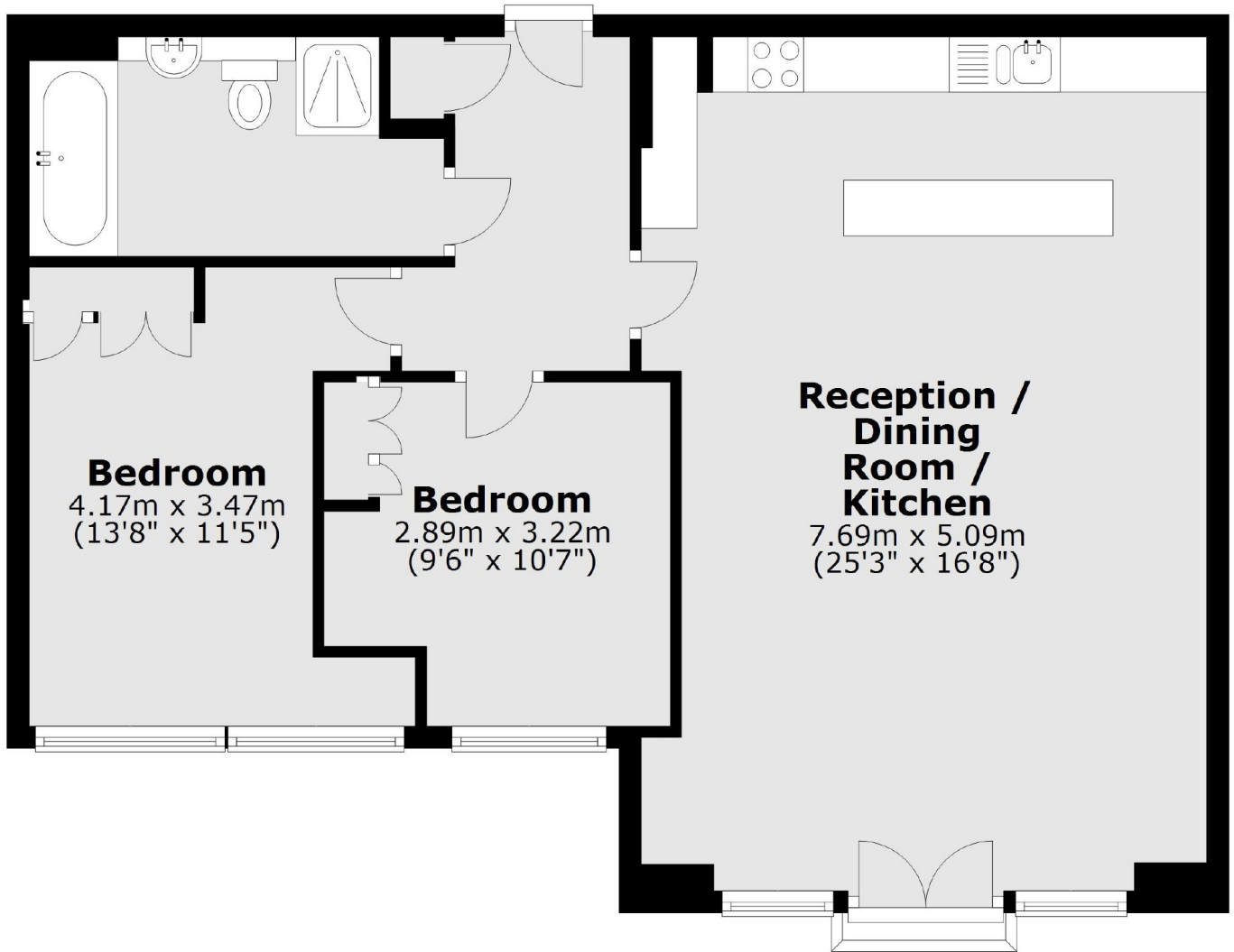
A bright and spacious apartment situated on the banks of The River Thames. The property offers an impressive open plan living area with contemporary kitchen, two double bedroom and a bathroom. The flat further benefits from being close to local amenities and transport links.

Point Wharf is a sought-after river side development close to Brentford High Street. It is within half a mile from Brentford overground station and a short drive from the M4/A4 providing great access in and out of London. The property is also a short distance away from Brentford High Street and local amenities.

### Features

- No Onward Chain
- Two Bedrooms
- Secure Underground Parking
- Spacious Apartment
- Good Condition
- Riverside Development

Point Wharf Lane,  
Brentford, TW8



Total area: approx. 73.3 sq. metres (788.7 sq. feet)