



Pump House Crescent, TW8

£350,000

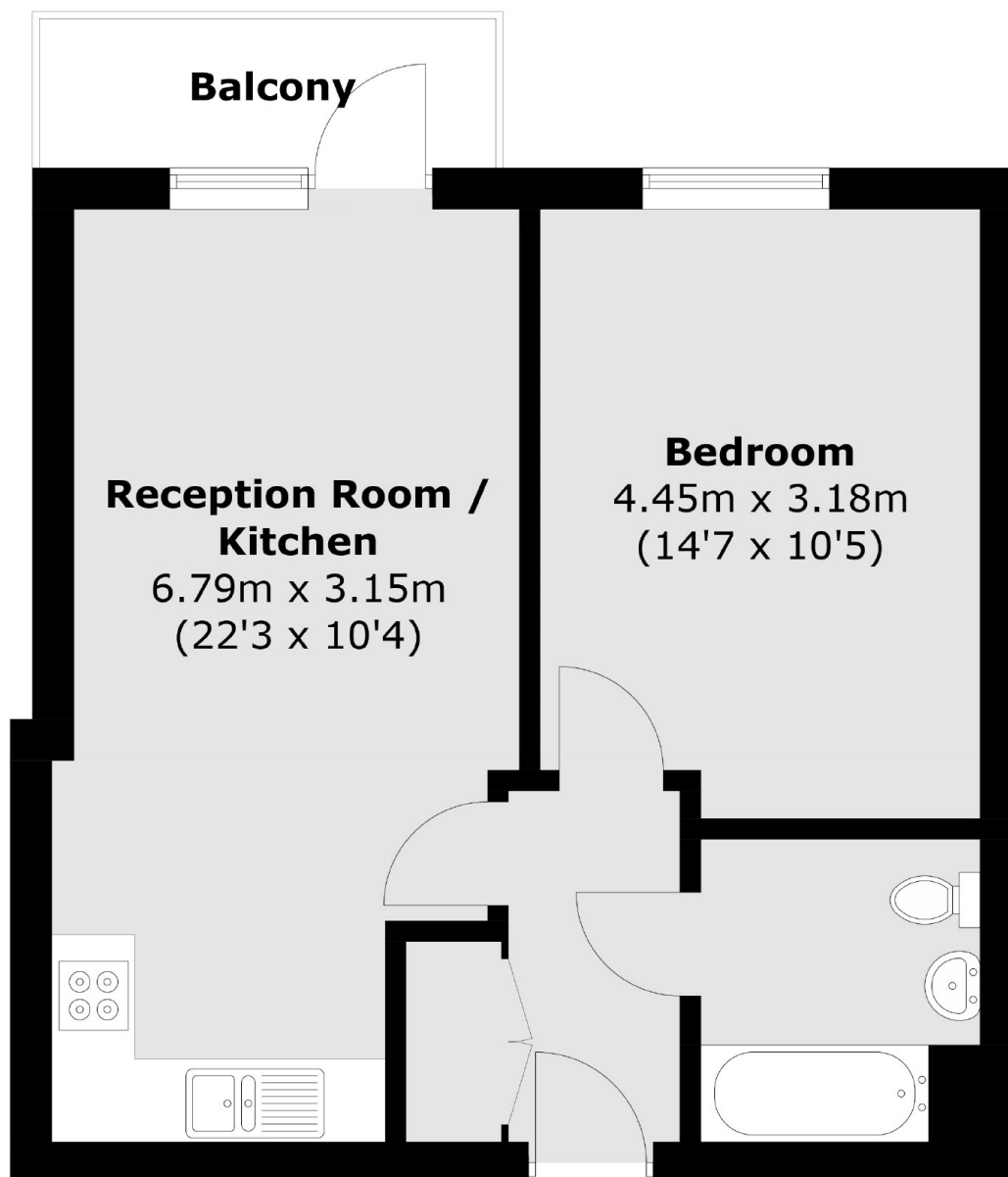
An immaculately presented one bedroom apartment in the sought-after Kew Bridge West development. With open plan kitchen/reception, floor to ceiling windows and long lease - perfect as a first time buy or investment.

The Kew Bridge West development is located next to the River Thames and within walking distance to Kew Bridge station with direct links to Waterloo, while the motorist is well served by the A4/M4. There are also a number of bus routes close by.

Features

- One Double Bedroom
- Modern Development
- Private Balcony
- River Views
- Long Lease
- Lift Access

Pump House Crescent, Brentford, TW8



Total area (approx.): 44.9 sq. m (483.3 sq. ft)
Balcony: 3.6 sq. m (38.7 sq. ft)

Dexters

Chiswick
388 Chiswick High Road
London
W4 5TF
Sales
020 8995 4321

Energy Rating: C. We aim to make our particulars both accurate and reliable. However they are not guaranteed; nor do they form part of an offer or contract. If you require clarification on any points then please contact us, especially if you're traveling some distance to view. Please note that appliances and heating systems have not been tested and therefore no warranties can be given as to their good working order.

 **RICS** | Regulated
Estate Agent
and Letting Agent

[dexters.co.uk](https://www.dexters.co.uk)