



Sidney Gardens, TW8

£350,000

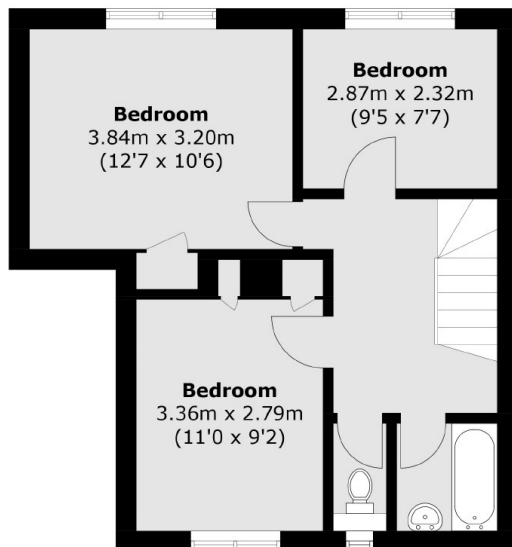
A three double bedroom, split-level maisonette. With balcony, no onward chain and close to transport.

Sidney Gardens is located approximately 150 metres from Brentford Station which offers fast trains into Waterloo. The property is under a mile to Northfields underground station.

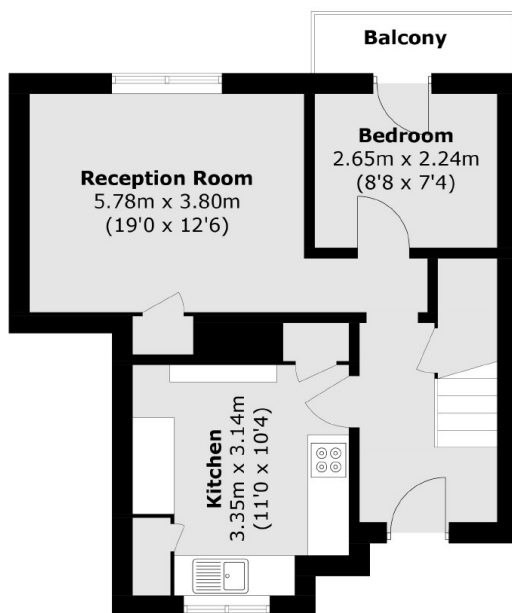
Features

Three Double Bedrooms
Maisonette
Split-Level
Balcony
No Onward Chain
Close To Station

Sidney Gardens, Brentford, TW8



Third Floor



Second Floor

Total area (approx.): 83.9 sq. m (903.1 sq. ft)
Balcony area (approx.): 2.5 sq. m (26.9 sq. ft)