



Ellesmere Road, W4

£461 Per week

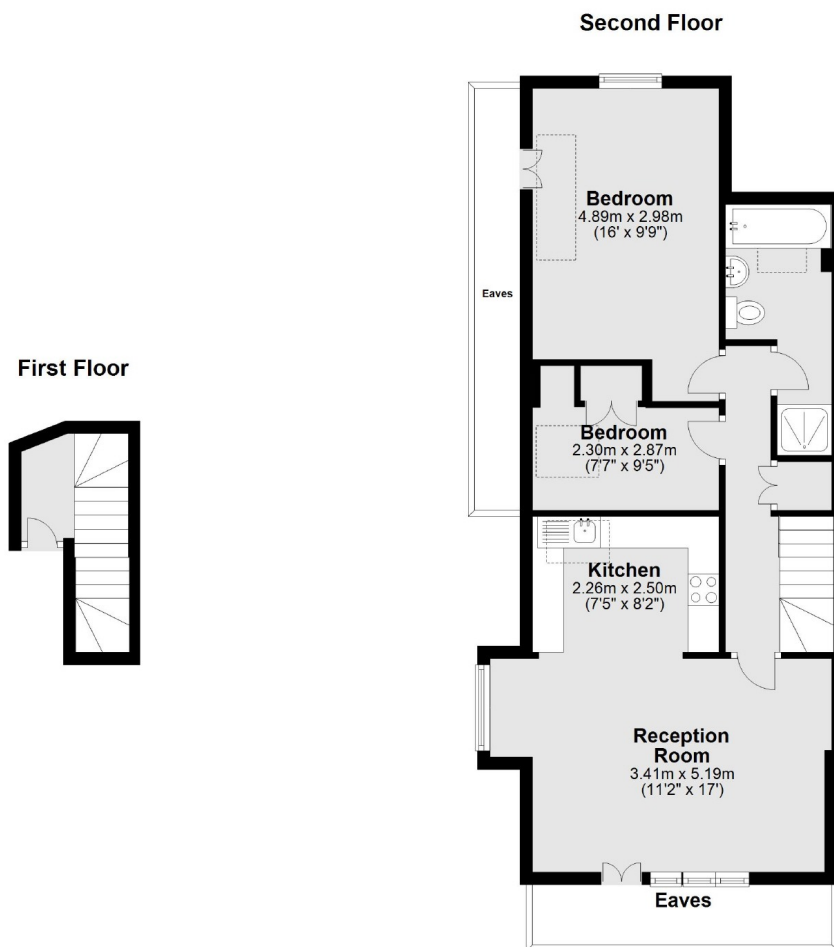
A newly refurbished two bedroom apartment on the top floor with an open plan kitchen/reception room, two bedrooms and new bathroom with shower and bath.

Ellesmere Road is located in central Chiswick with Chiswick Park and Chiswick mainline station less than a mile away offering easy access into the city.

Features

- Two Bedrooms
- Open Plan
- Central Chiswick
- Top Floor
- Professionally Managed
- Transport Links

Ellesmere Road, London, W4



Total area: approx. 61.7 sq. metres (664.5 sq. feet)