

## Hartington Road, W4 £475,000

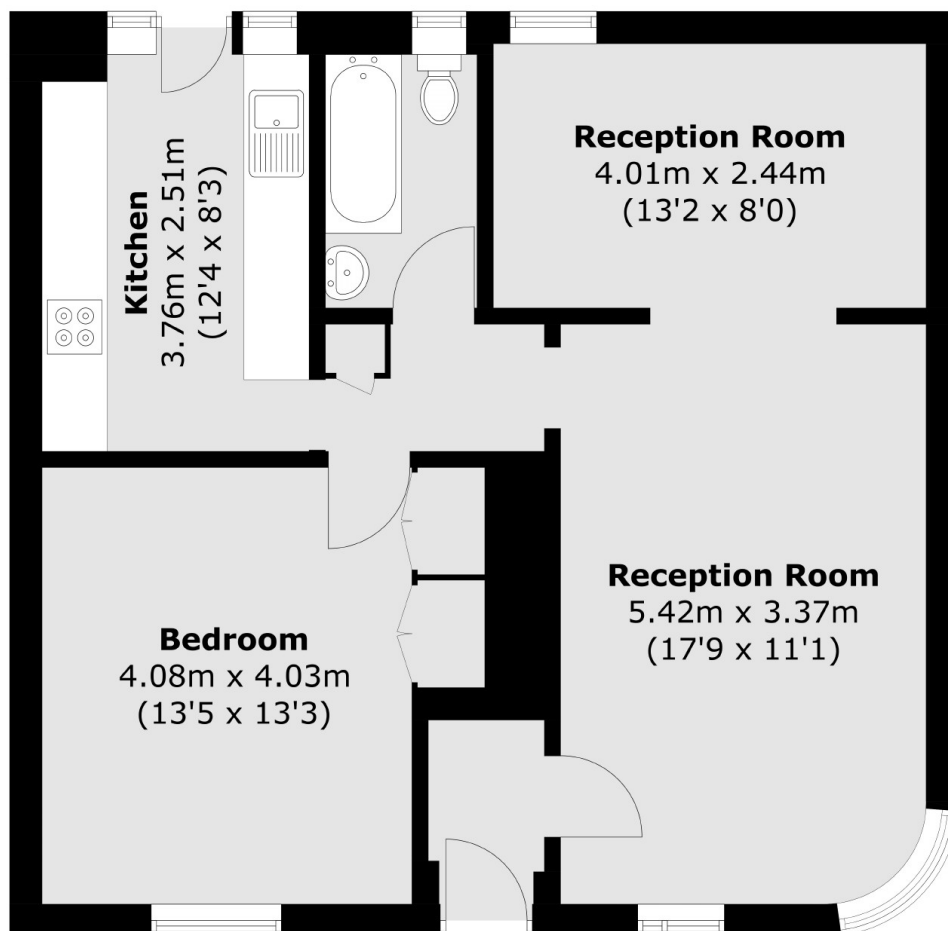
A two double bedroom apartment set within this sought-after Art Deco gated development. With on-site parking, communal gardens overlooking the River Thames and long lease.

Hartington Court is located within walking distance to Chiswick Station (GWR). The property is also a short walk from local green spaces such as Chiswick House & Grounds, local shops, cafés and other areas such as Chiswick Mall and Fauconberg Village. The outstanding Grove Park School is also a short distance away.

### Features

- Two Bedrooms
- Gated Development
- Long Lease
- On-Site Parking
- Riverside Development
- Communal Gardens

Hartington Road,  
London, W4



Total area (approx.): 64.2 sq. m (691.0 sq. ft)

**Dexters**

Chiswick  
388 Chiswick High Road  
London  
W4 5TF  
Sales  
020 8995 4321

Energy Rating: C. We aim to make our particulars both accurate and reliable. However they are not guaranteed; nor do they form part of an offer or contract. If you require clarification on any points then please contact us, especially if you're traveling some distance to view. Please note that appliances and heating systems have not been tested and therefore no warranties can be given as to their good working order.

 **RICS** | Regulated  
Estate Agent  
and Letting Agent

[dexters.co.uk](http://dexters.co.uk)