



Chiswick High Road, W4

£1,425,000

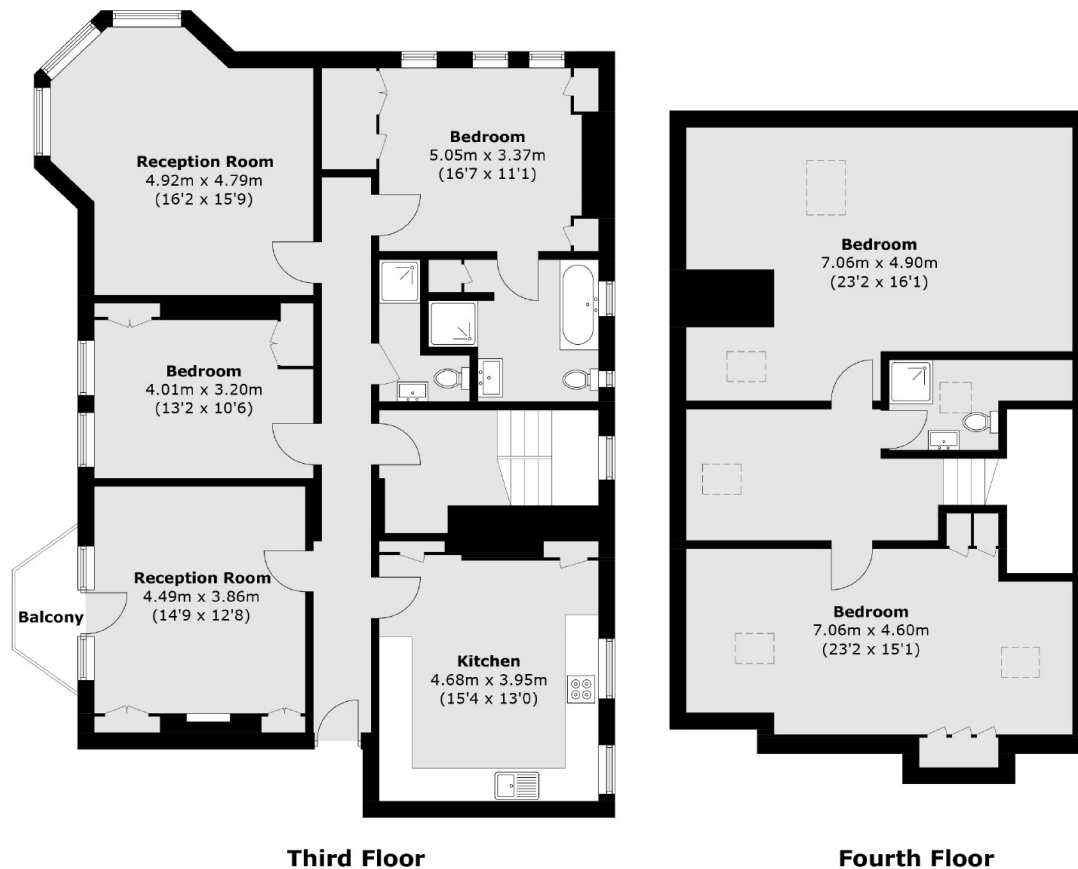
This impressive top floor apartment puts all of Chiswick's and Hammersmith's benefits on your doorstep. The property retains period features as well as views from the windows and balcony. The apartment is in good condition throughout. The property has a share of the freehold.

Prebend Mansions runs along Chiswick High Road. The property is within five minutes walk to local transport links such as Stamford Brook and Turnham Green stations. They service the Piccadilly and District lines. There are also local bus links along the high road. Chiswick High Road hosts a variety of local shops, restaurants and bars.

Features

- Sought After Mansion Block
- Very Central Location
- Share Of Freehold
- Close To Transport
- Over 2,000sqft
- Split Level

Chiswick High Road, London, W4



Total area (approx.): 193.2 sq. m (2079.6 sq. ft)
Balcony area (approx.): 2.5 sq. m (26.9 sq. ft)
(Excluding Void)