



Chiswick High Road, W4

£484 Per week

A two double bedroom apartment with a front facing open-plan reception room, views overlooking Turnham Green and a private roof terrace.

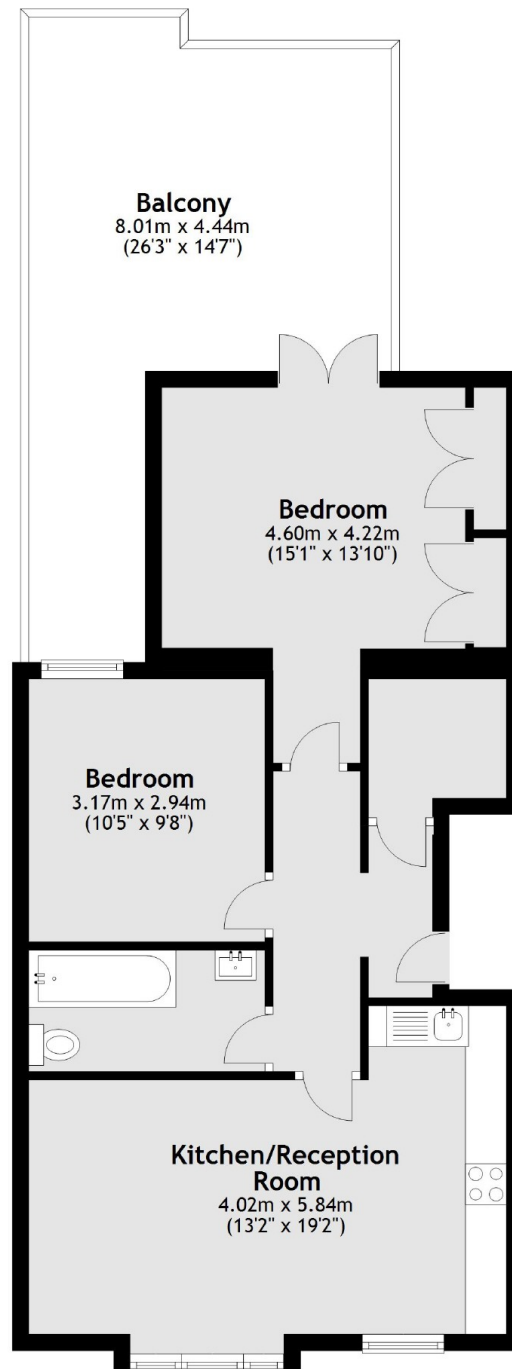
This apartment is perfectly located for all of the amenities of Chiswick High Road and is within a quarter of a mile from Chiswick Park station.

Features

- Two Double Bedrooms
- Open-Plan
- First Floor
- Private Roof Terrace
- Central Location
- Transport Links

Chiswick High Road,
London, W4

First Floor



Total area: approx. 60.1 sq. metres (647.4 sq. feet)