



Thames Village, W4

£599,950

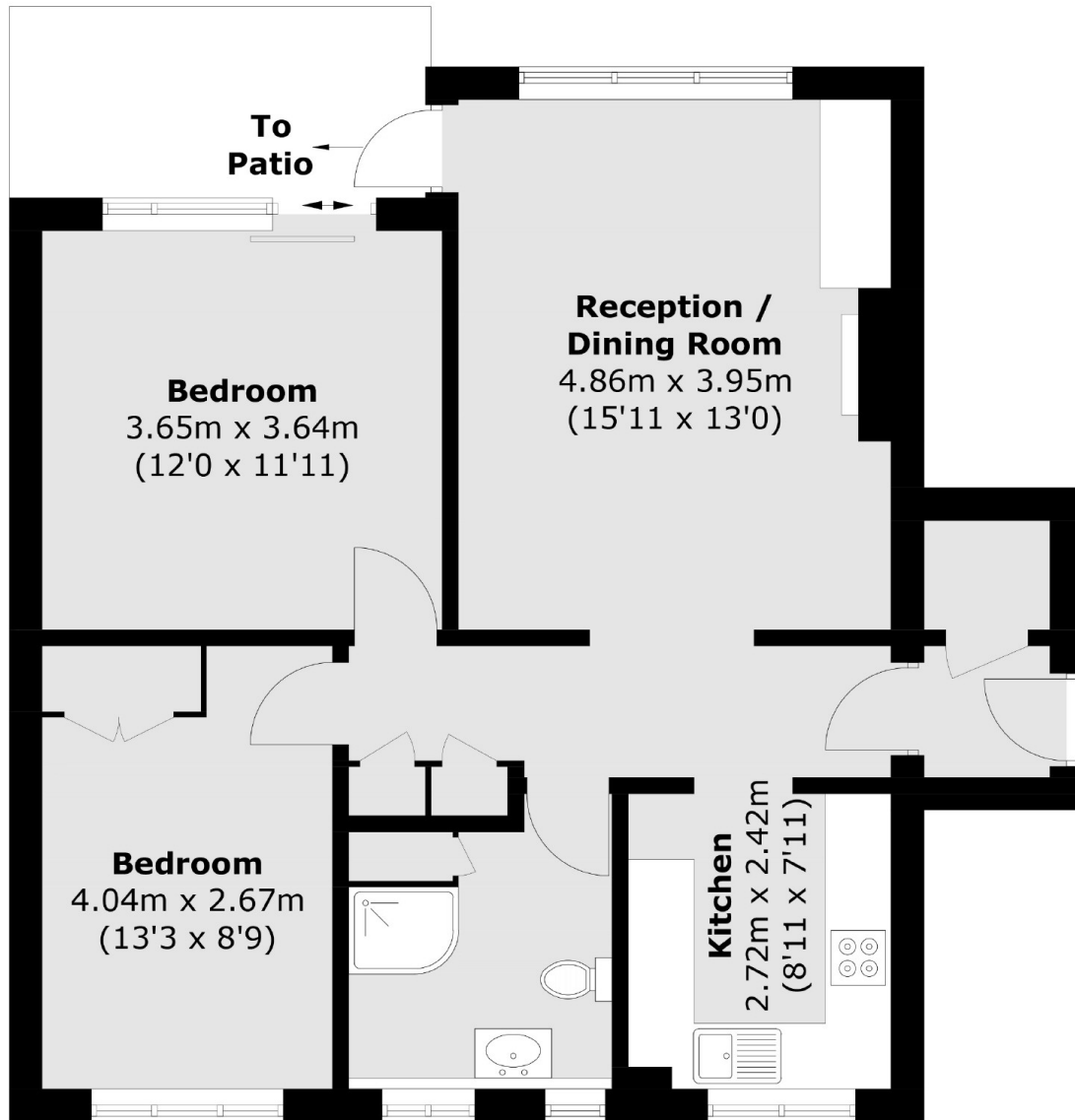
A beautifully presented two bedroom ground floor apartment. The property is within the sought after Thames Village private development on the banks of the River Thames. The apartment has a share of freehold and is offered chain free. There are extensive communal gardens and residents parking. Grove Park School is nearby. The property comes with the option of a garage to be purchased separately.

Thames Village is located within 0.4 Miles of Chiswick Station (GWR). The property is also a short walk from local green spaces such as Chiswick House & Grounds as well as the river. Local shops, cafés and restaurants are close by next to the station and other areas such as Chiswick Mall and Fauconberg Village. The property is within the catchment of Grove Park School.

Features

- Riverside Location
- Ground Floor
- Chain Free
- Share Of Freehold
- Garage Available
- Great Condition

Thames Village, London, W4



Total area (approx.): 69.4 sq. m (747.0 sq. ft)

Dexters

Chiswick
388 Chiswick High Road
London
W4 5TF
Sales
020 8995 4321

Energy Rating: D. We aim to make our particulars both accurate and reliable. However they are not guaranteed; nor do they form part of an offer or contract. If you require clarification on any points then please contact us, especially if you're traveling some distance to view. Please note that appliances and heating systems have not been tested and therefore no warranties can be given as to their good working order.

 **RICS** | Regulated
Estate Agent
and Letting Agent

dexters.co.uk