



Milnthorpe Road, W4
£7,000,000

Dexters



Milnthorpe Road, W4

This detached house is unique. With almost 6,500sqft of living space, the property offers everything a family may need from; secure gated off street parking, to a separated home gym and utility space, a spacious ground floor with a high end integrated kitchen, six bedrooms all with dressing spaces and en-suites, to a large 60ft garden and swimming pool. The house is offered chain free for a quick completion.

On entry you are greeted into a large entry foyer with a stunning open stairwell full of natural light from the large tapestry window along with views through the house looking out to the large garden. Walking through, there is an impressive central dining room; perfect for hosting with views to the garden. Adjoining is a very high specification integrated kitchen with appliances from Gaggenau. To the right is a large lounge room with a further separated snug. This floor also incorporates a cloakroom and home office. The lower ground floor is split into separated rooms which have various uses such as a home gym, a wine store room and a large service/utility room.

Upstairs, the open stair well continues to impress and the first floor leads to the principle suite. This room has views onto the garden, has a separate dressing room and full four piece bathroom. This floor also hosts three other bedrooms with dressing areas and en-suites. The second floor has two more bedrooms with dressing areas and en-suites along with a further store room.

Features

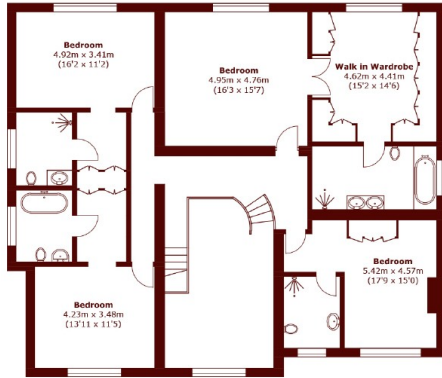
- Unique Detached House
- Pool & Large Garden
- Gated Driveway For Five Cars
- Home Gym/Wine Room/Utility
- Chain Free
- Grove Park



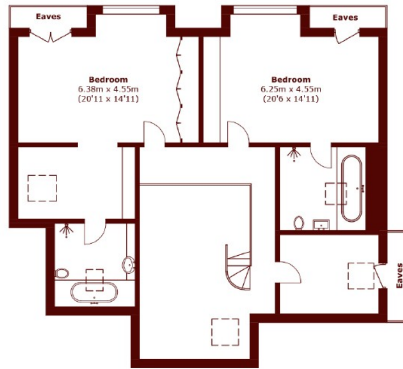




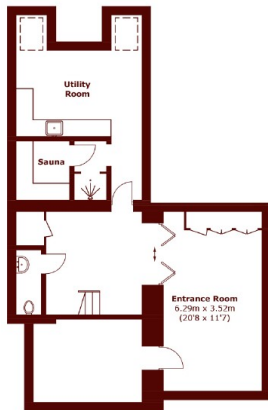
Milnthorpe Road, London, W4



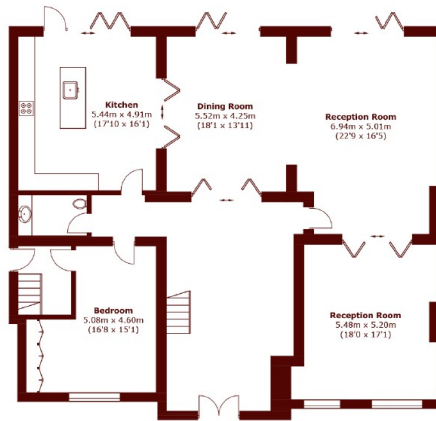
First Floor



Second Floor



Lower Ground Floor



Ground Floor



Total area (approx.): 586.6 sq. m (6,314.2 sq. ft)
Outbuildings: 17.4 sq. m (187.3 sq. ft)
(Excluding Eaves)