



## Sutton Court, W4

£925,000

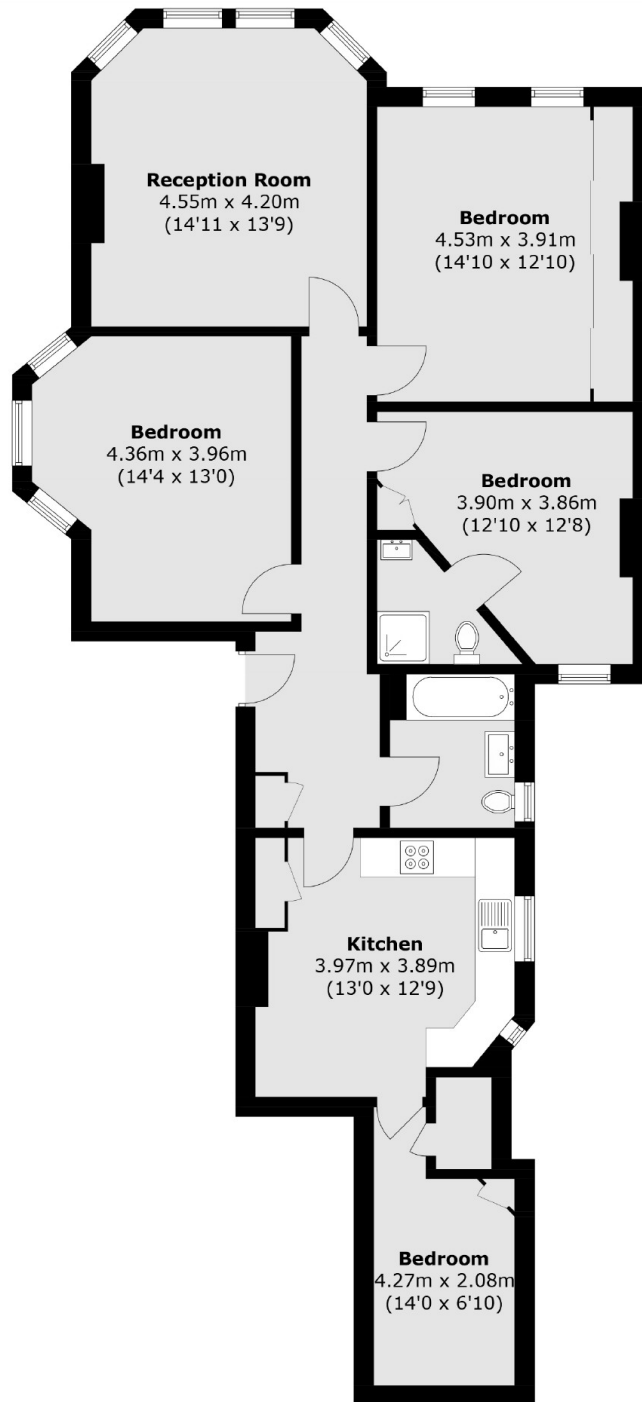
A large four bedroom apartment with views over the residents gardens on the third floor. The property is within the sought after Sutton Court which is a short walk from local amenities and outstanding schools. The property is offered chain free and includes a share of freehold.

Located close to the grounds of Chiswick Park or the local shops, bars and restaurants of Fauconberg Village. The nearest train station is Chiswick overground and the E3 bus runs from directly in front of the property to Turnham Green for the tube. The property is within the Grove Park School catchment.

### Features

- Mansion Block
- Third Floor
- Chain Free
- Views Of Communal Gardens
- Gated Residents Gardens
- Grove Park School Catchment

Sutton Court,  
London, W4



Total area (approx.): 109.6 sq. m (1,179.7 sq. ft)