

Chiswick Village, W4

£461 Per week

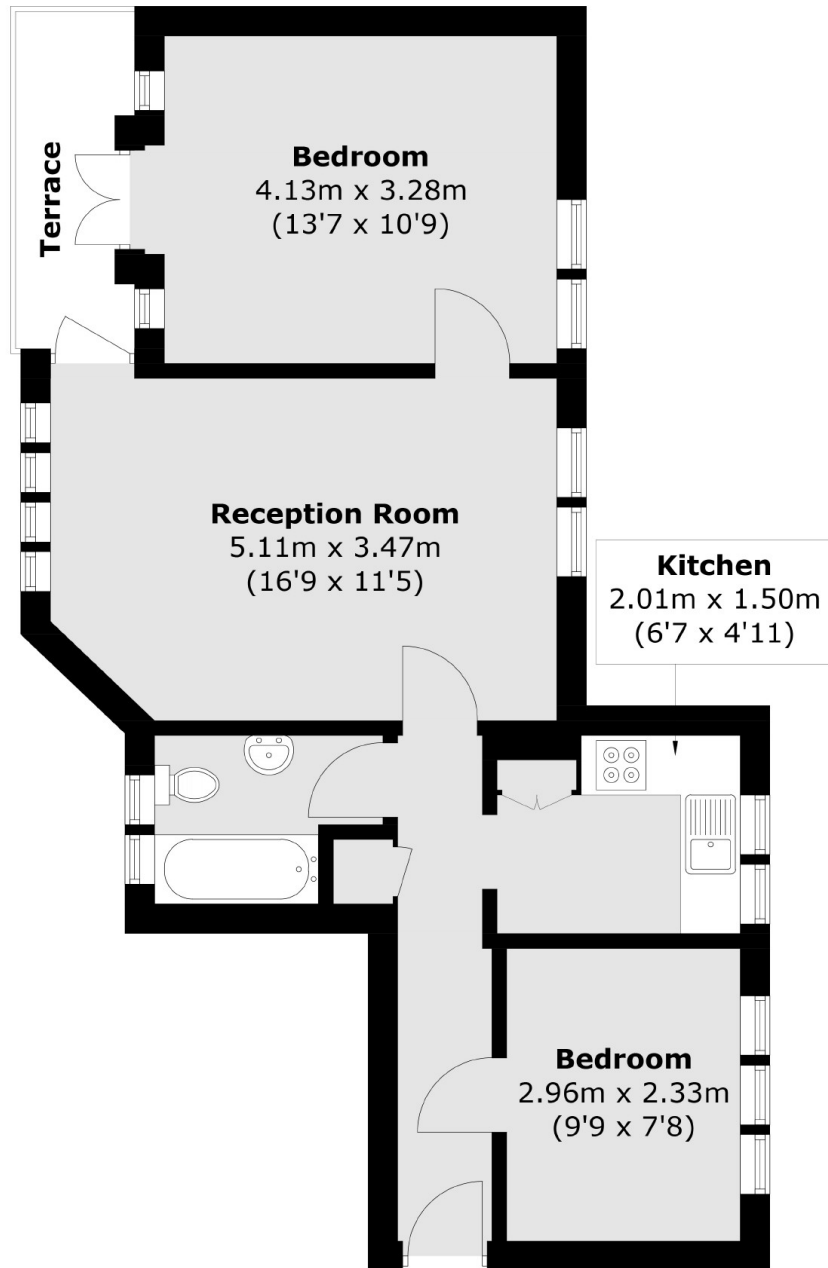
A two bedroom apartment located on the ground floor in this popular art deco development, with hot water and heating included in the rent. The property is overlooking the well-maintained communal gardens and has wood flooring throughout.

Chiswick Village is within half a mile of both Kew Bridge and Gunnersbury stations and is also close to the M4/A4 providing excellent access in and out of town.

Features

- Two Bedrooms
- One Bathroom
- Hot Water & Heating Included
- Ground Floor
- Communal Gardens
- Purpose-Built Block

Chiswick Village, London, W4



Ground Floor

Total area (approx.): 53.7 sq. m (578.0 sq. ft)
Terrace: 3.7 sq. m (39.8 sq. ft)