



Colonial Drive, W4

£695,000

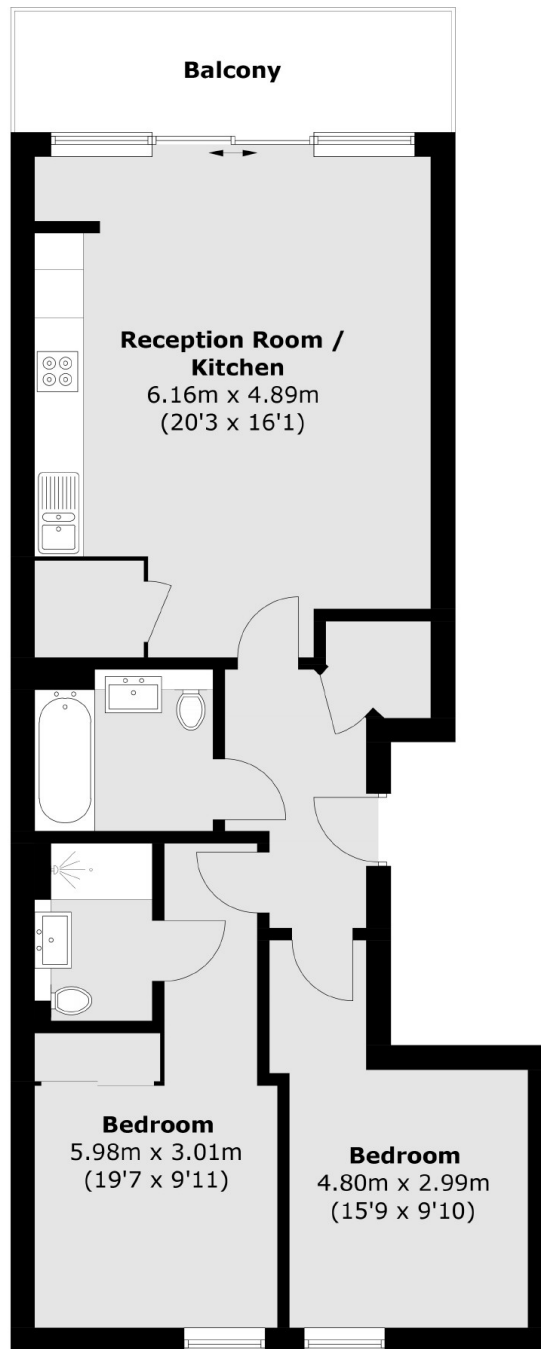
Offered with no onward chain is this modern two bedroom, two bathroom apartment situated in the heart of Chiswick. The property is in excellent condition throughout and comes with a private balcony, lift and a concierge.

Colonial Drive is located within half a mile from Chiswick Park tube station and the amenities on Chiswick High Street. The property also falls within the outstanding Belmont School catchment.

Features

- Two Bed/Two Bath
- No Chain
- Private Balcony
- Concierge Service
- Popular Development
- Central Location

Colonial Drive,
London, W4



Total area (approx.): 71.8 sq. m (772.8 sq. ft)
Balcony: 8.1 sq. m (87.2 sq. ft)