



Chiswick Village, W4

£738 Per week

This four double bedroom apartment has been recently refurbished and offers a modern kitchen, wood flooring throughout and access to well-maintained communal gardens which would be perfect for families and professional sharers alike.

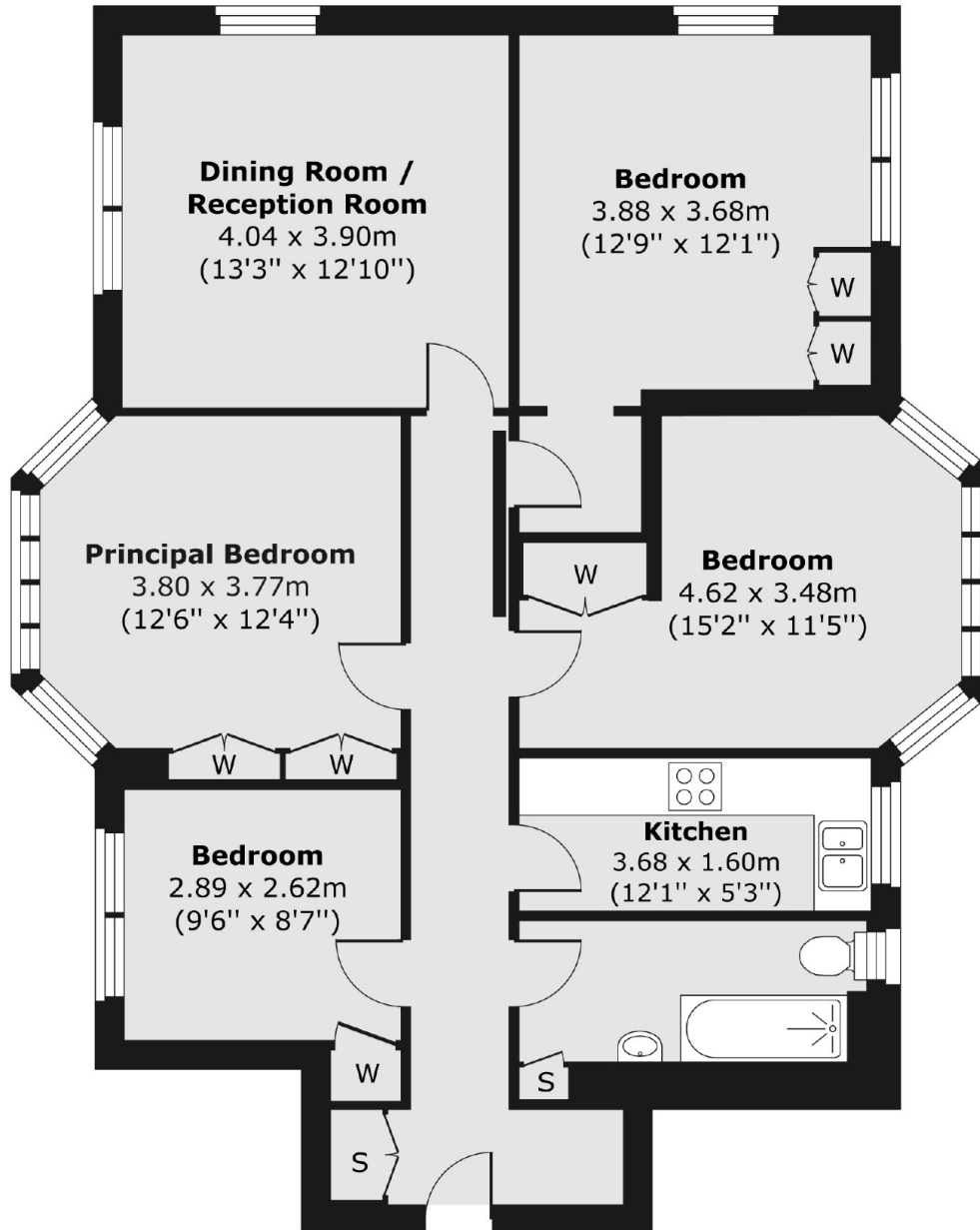
Chiswick Village is an extremely desirable development less than half a mile from both Gunnersbury underground station and Kew Bridge Rail Station.

Features

- Four Double Bedrooms
- Large Reception Room
- Modern Kitchen
- Wood Flooring
- Communal Gardens
- Close To Stations

Chiswick Village, London, W4

First Floor



Total area (approx.) 92.86 sq. m (1,000 sq. ft)