



## Grove Park Road, W4

£507 Per week

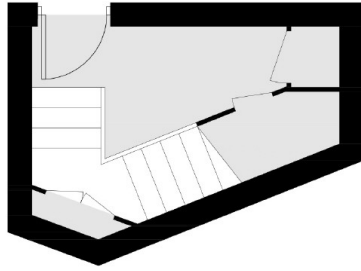
A recently refurbished two bedroom first floor maisonette with plenty of storage. The property comprises a large reception room, two bedrooms, modern fully fitted kitchen, bathroom and roof terrace.

Grove Park Road is well located for almost immediate access to Chiswick railway station the river Thames and the parade of shops.

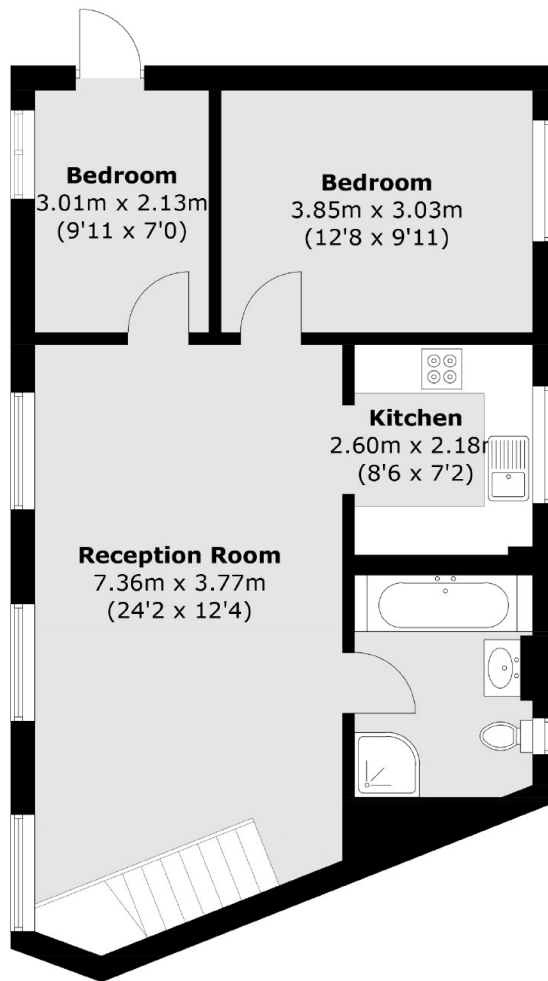
### Features

Recently Refurbished  
Two Bedrooms  
Separate Kitchen  
Private Roof Terrace  
First Floor  
Wooden Flooring

Grove Park Road,  
London, W4



### Ground Floor



### First Floor

Total area (approx.): 68.5 sq. m (737.4 sq. ft)