



## Grove Park Road, W4

£530 Per week

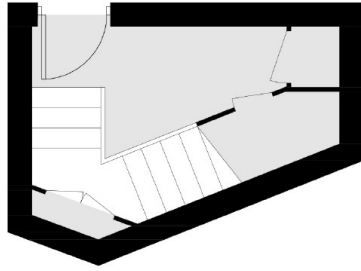
A newly refurbished two bedroom first floor maisonette located on Grove Park Road moments from Chiswick Station. The property comprises a large reception room, two bedrooms, modern fully fitted kitchen, bathroom and roof terrace. Further benefits include plenty of storage space in the entrance hallway.

Grove Park Road is well located for almost immediate access to Chiswick railway station the river Thames and the parade of shops.

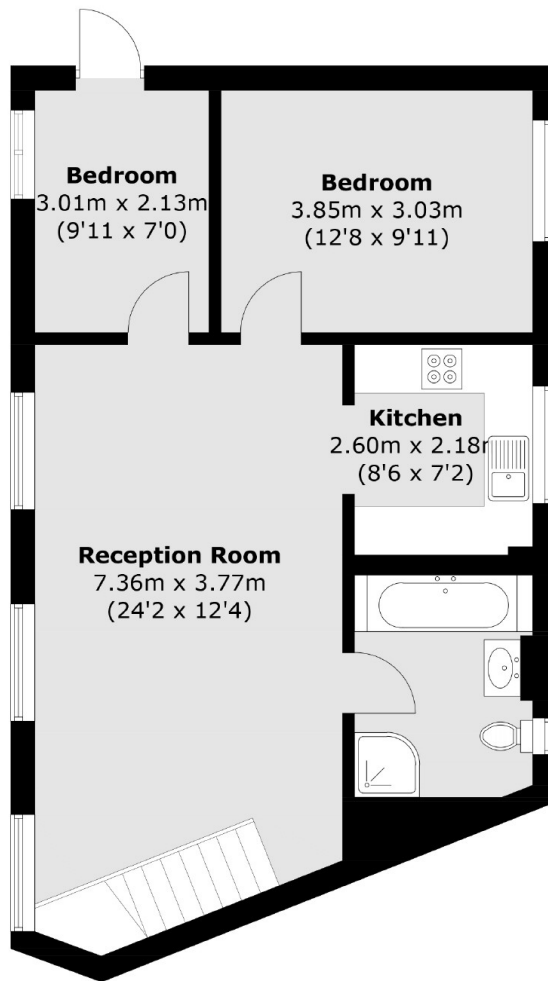
### Features

Newly Refurbished  
Two Bedrooms  
Separate Kitchen  
Private Roof Terrace  
First Floor  
Gas Central Heating

Grove Park Road,  
London, W4



### Ground Floor



### First Floor

Total area (approx.): 68.5 sq. m (737.4 sq. ft)