



Wellesley Road, W4 £320,000

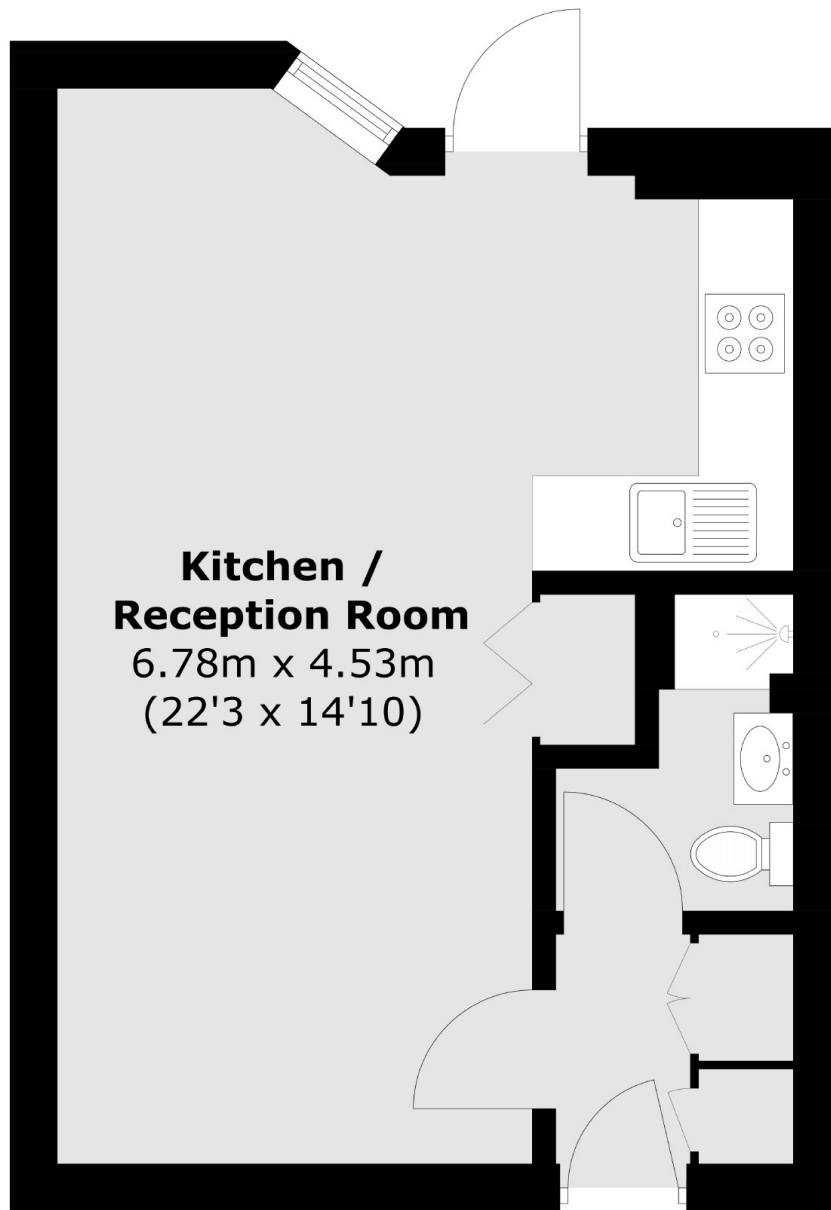
A nicely presented, ground floor studio apartment situated in the heart of Chiswick within this highly sought after tree lined area. Over 900 years remaining on the lease, together with a share of the Freehold. Well managed residential development, in a popular residential area within walking distance of Chiswick High Road with its extensive array of boutique restaurants, shops, and leisure facilities. Convenient for supermarkets; M&S, Waitrose, Sainsbury's, Tesco and Co-op. The accommodation comprises of a studio 22'3 x 14'10 which can accommodate a king-sized bed, single aspect, overlooking secluded and well manicured communal gardens, bay seating area, fitted wardrobes and storage, galley style kitchen, night storage heating, toilet with shower cubicle, 10ft lockable garage and lockable Bike storage cupboard.

Transport links; Gunnersbury, Kew Bridge and Chiswick Park stations (District/Overground), Turnham Green station (Piccadilly), numerous local bus routes and Chiswick cycle superhighway. Road access to Central London via A4/M4 and walking distance to Brentford Football Club.

Features

- Central Location
- Garage Included
- Communal Gardens
- Chain Free
- Share Of Freehold
- Normal Service Charges

Wellesley Road,
London, W4



Total area (approx.): 30.3 sq. m (326.1 sq. ft)

Dexters

Chiswick
388 Chiswick High Road
London
W4 5TF
Sales
020 8995 4321

Energy Rating: D. We aim to make our particulars both accurate and reliable. However they are not guaranteed; nor do they form part of an offer or contract. If you require clarification on any points then please contact us, especially if you're traveling some distance to view. Please note that appliances and heating systems have not been tested and therefore no warranties can be given as to their good working order.

 **RICS** | Regulated
Estate Agent
and Letting Agent

dexters.co.uk