



Layton Road, TW8

£520,000

OIEO A three bedroom period property with great potential. This property has come to market for the first time in two generations. The property is ideal for a young family or those looking to add value. The property also benefits from a large garden and is offered with no onward chain.

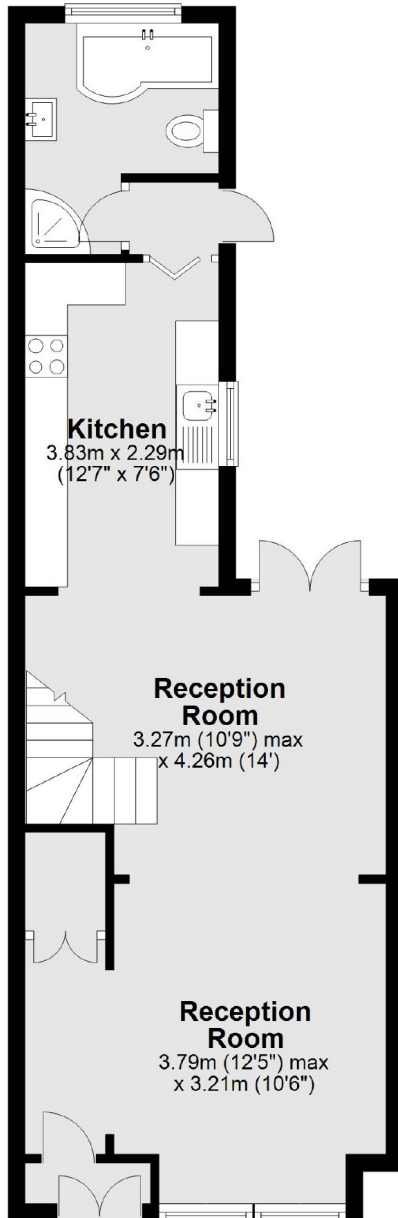
Layton Road is a short walk to Brentford station which has frequent fast services to Waterloo. There is also easy access to Brentford Hight Street, the river and associated bus links. Underground Stations are also easily commuted to.

Features

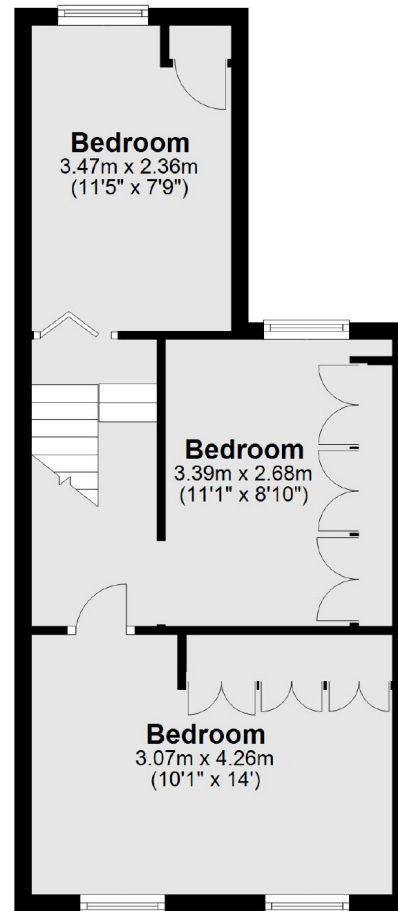
- Period House
- Potential To Extend STPP
- Large Garden
- Close To Transport / Amenities
- No Onward Chain
- Close To The River

Layton Road, Brentford, TW8

Ground Floor



First Floor



Total area: approx. 82.6 sq. metres (889.1 sq. feet)