



## Chesterfield Road, W4

£1,026 Per week

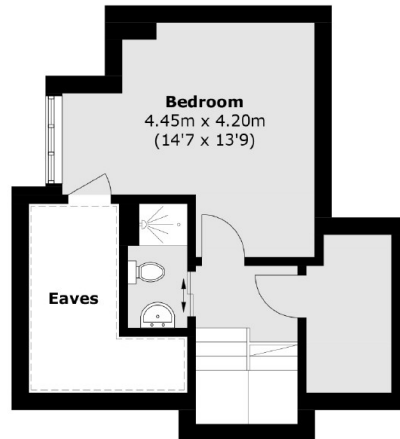
This elegant four bedroom home, spread across three floors, is beautifully arranged and enjoys a desirable position in Grove Park.

Chesterfield is ideally located for the amenities and transport links of Chiswick High Road as well as Chiswick Railway Station and for motorists there is easy access to the A4.

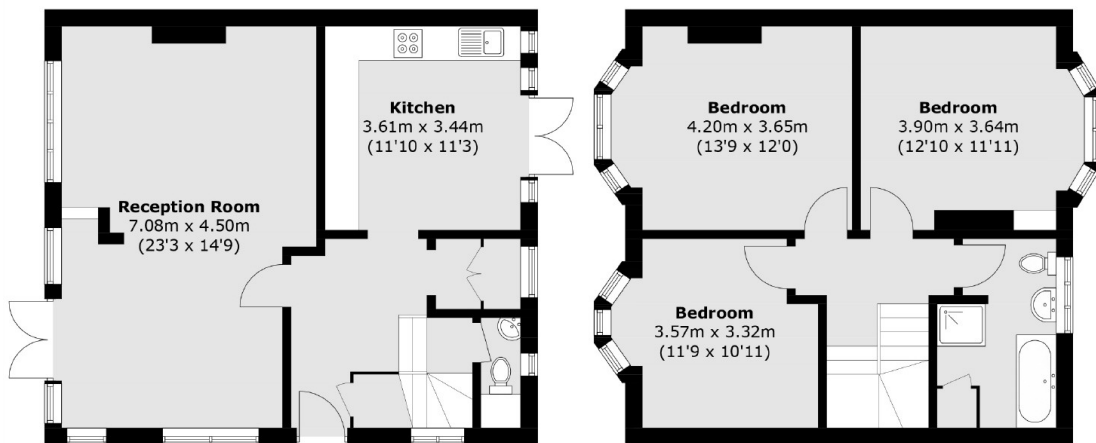
### Features

- Dine-In Kitchen
- End Of Terrace
- Four Bedrooms
- Large Private Garden
- Two Bathrooms
- Three Floors

Chesterfield Road,  
London, W4



Second Floor



Ground Floor

First Floor

Total area (approx.): 139.7 sq. m (1,503.7 sq. ft)  
(Excluding Eaves)