

Gunnersbury Mews, W4

£1,269 Per week

A five bedroom town house in a private gated development arranged over four floors and offering just under 2,000 sq ft with underfloor heating, and is located close to Gunnersbury station and opposite Chiswick Business Park

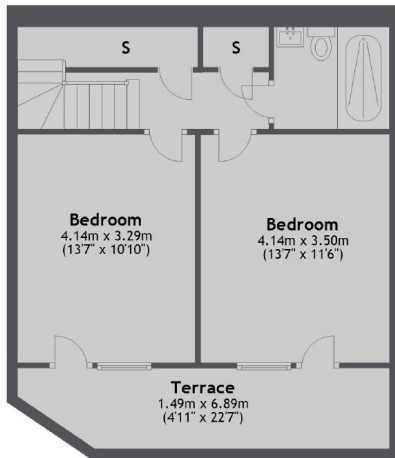
Perfect for access to Chiswick High Road, Gunnersbury tube station, the A4 and Chiswick Business Park all of which are yards from the doorstep.

Features

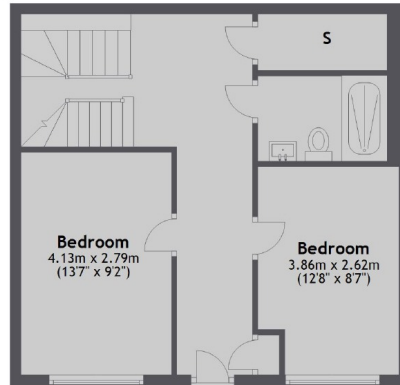
- Five Bedrooms
- Three Bathrooms
- High Ceilings
- Underfloor Heating
- Central Location
- Gated Development

Gunnersbury Mews, London, W4

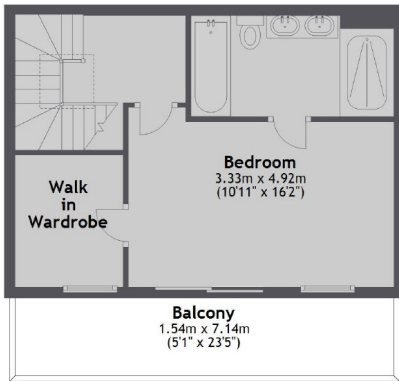
Lowest Ground Floor



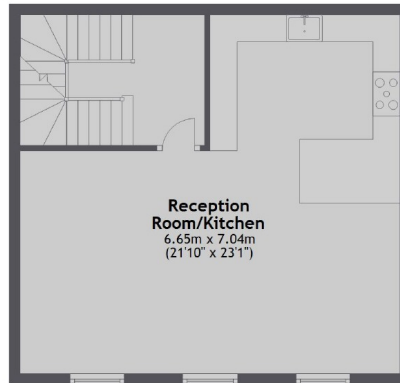
Ground Floor



Second Floor



First Floor



Main area: Approx. 171.9 sq. metres (1850.1 sq. feet)
Plus terrace/ balconies, approx. 9.9 sq. metres (106.7 sq. feet)