



## Weston Road, W4

£1,250,000

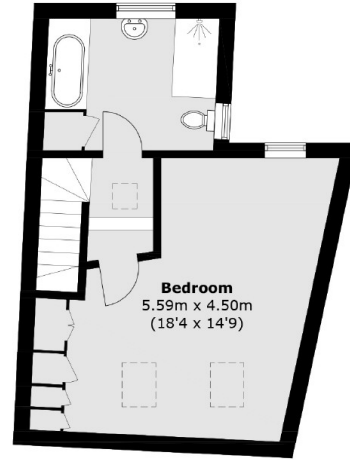
A large terraced house that is well presented throughout. This property retains period features and enjoys a light airy space through the double reception room which leads through into a kitchen diner that has skylights and large doors into the garden. Upstairs there are four bedrooms and two large bathrooms. The house is close to local transport and amenities.

Weston Road is 0.1 miles of South Acton station (Overground) and 0.4 miles of Chiswick Park station (District). The property is also 0.5 miles of the shops and restaurants of Chiswick High Road. Green spaces such as Turnham Green and the Gunnersbury Nature Reserve are nearby as well as local outstanding schools.

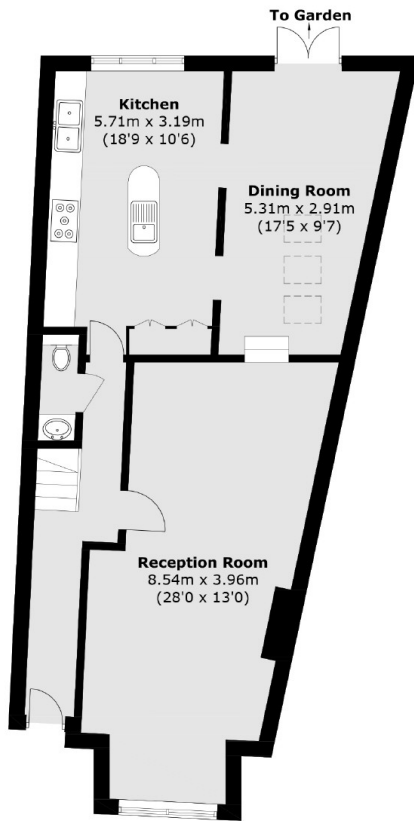
### Features

- Chain Free
- Large Proportions
- Close To Transport
- Period Features
- Private Garden
- Double Reception Room

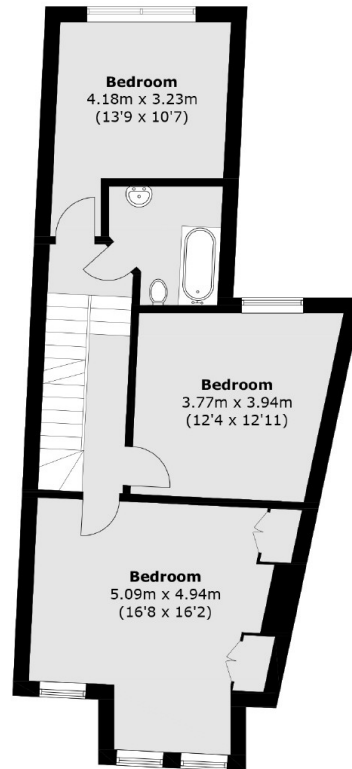
Weston Road,  
London, W4



Second Floor



Ground Floor



First Floor

Total area (approx.): 170.6 sq. m (1,836.3 sq. ft)