



Chara Place, W4

£1,153 Per week

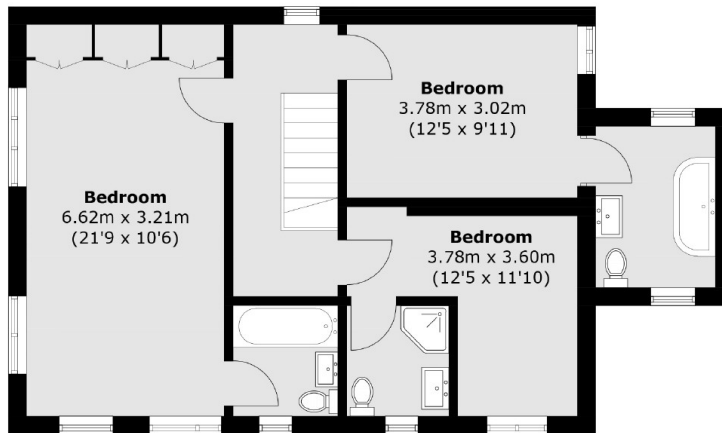
This elegant 4-bedroom home, spread across two floors, is beautifully arranged and enjoys a desirable position in Grove Park.

Milnthorpe is ideally located for the amenities and transport links of Chiswick High Road as well as Chiswick Railway Station and for motorists there is easy access to the A4.

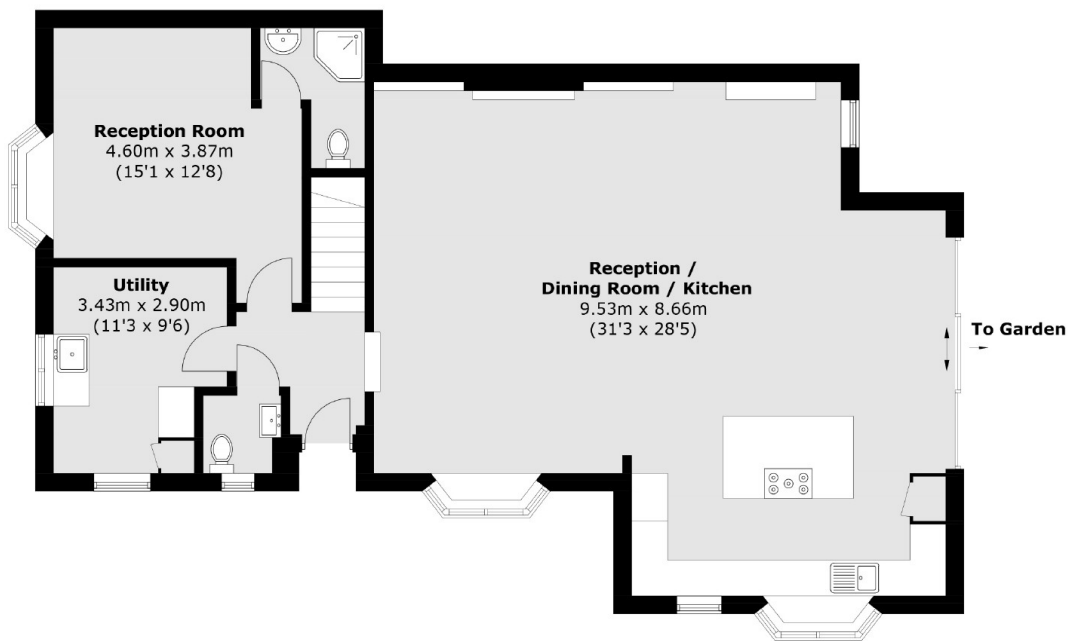
Features

- Open-Plan Kitchen
- Recently Refurbished
- Detached
- All Bedrooms Feature En-suites
- Four Bedrooms
- Large Private Garden

Chara Place, London, W4



First Floor



Ground Floor

Total area (approx.): 175.5 sq. m (1,889.1 sq. ft)