



## Orchard Road, TW8

£695,000

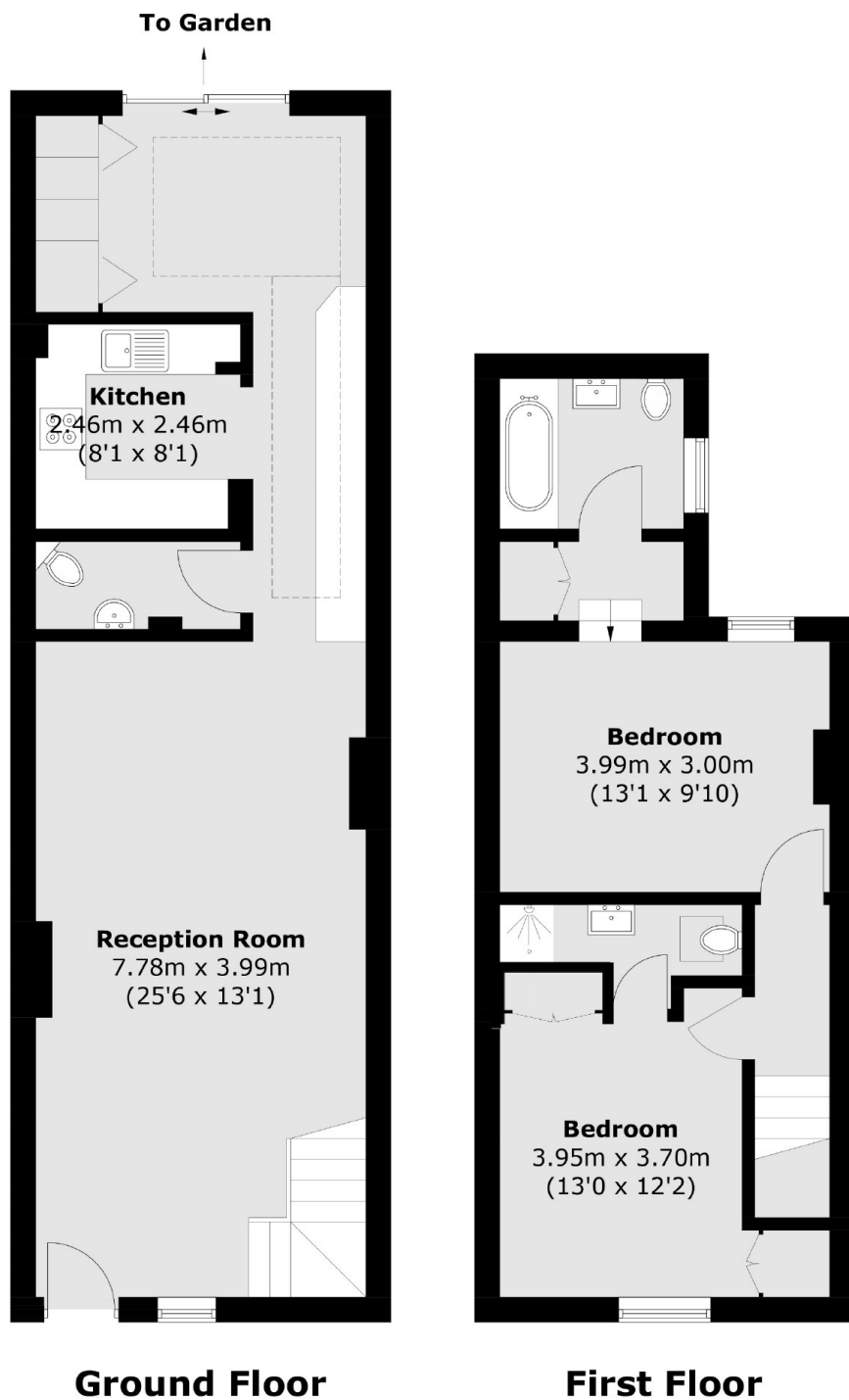
A well presented Victorian cottage that is a fantastic home for a young family with two comfortable double bedrooms, two bathrooms, a double reception room and a generous garden.

Orchard Road is a short walk to Brentford station which has frequent fast services to Waterloo. There is also easy access to Brentford Hight Street, the river and associated bus links.

### Features

- Period Cottage
- Two Double Bedrooms
- Two Bathrooms
- Double Reception Room
- Large Garden
- Close To Transport

# Orchard Road, Brentford, TW8



Total area (approx.): 94.2 sq. m (1,013.9 sq. ft)