

Gwynne Close, W4 £475,000

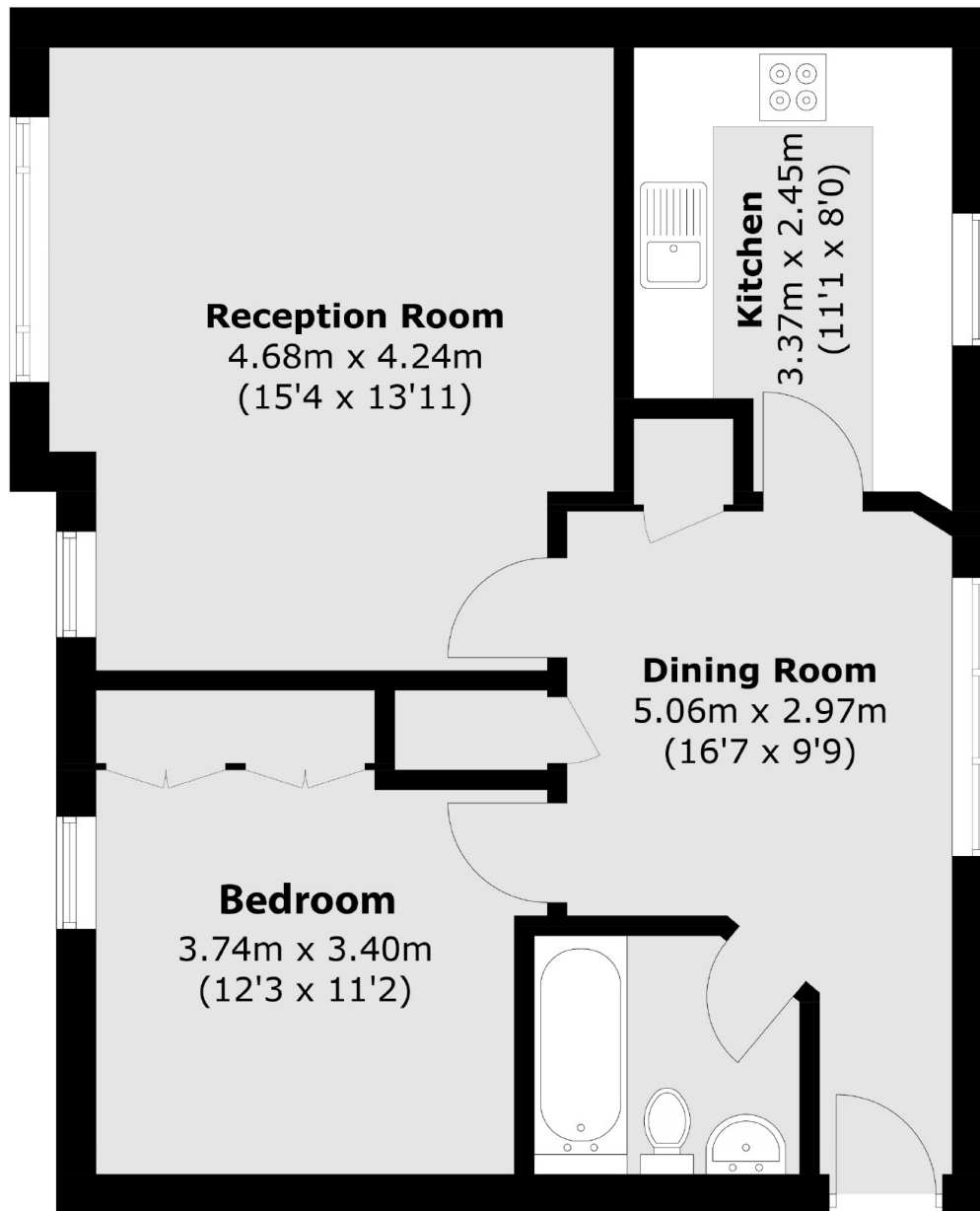
A bright and modern top floor, one bedroom apartment set within Regency Quay riverside gated development. With an allocated parking space, lift access and offered with no onward chain. The property is immaculately presented and benefits from a generous reception room, large master bedroom with fitted wardrobes, separate modern fitted kitchen with integrated appliances, dining area with river view and bathroom with shower over bath.

Gwynne Close is situated just moments from the Thames and Chiswick Pier. The property further benefits from use of communal gardens and is conveniently located for the recreational facilities of Chiswick House and grounds, the River Thames as well as Chiswick High Road and Turnham Green Underground Station, Chiswick (SWR) Station for trains to London Waterloo and very convenient road links.

Features

Gated Development
Riverside Living
Top Floor
Allocated Parking
Lift Access
Share Of Freehold

Gwynne Close,
London, W4



Total area (approx.): 56.0 sq. m (602.8 sq. ft)