



Great West Road, TW8

£275,000

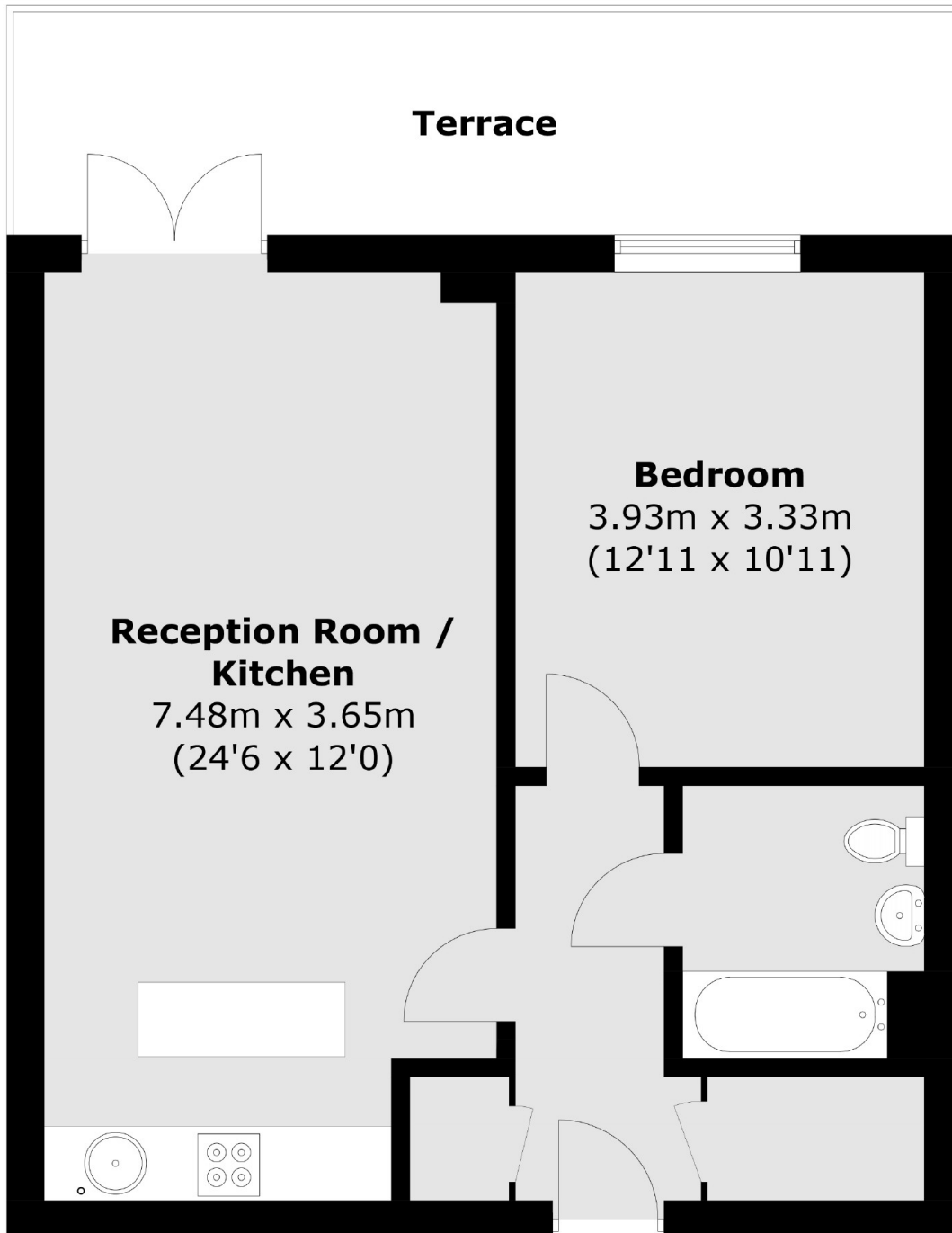
A one double bedroom apartment in the popular Great West Quarter Development. The property has high ceilings, a open plan kitchen/reception room, large utility cupboards, private balcony, a concierge service, a communal gym and secure underground parking.

The Great West Quarter Development is located just half a mile from Brentford mainline station which has a frequent service to London Waterloo and it is also within a mile from South Ealing tube station and the amenities along Brentford High Street.

Features

Great West Quarter
Open Plan
Concierge Service
Communal Gym
Balcony
Allocated Parking

Great West Road,
Brentford, TW8



Total area (approx.): 53.6 sq. m (576.9 sq. ft)
Terrace area : 13.7 sq. m (147.4 sq. ft)

Dexters

Chiswick
388 Chiswick High Road
London
W4 5TF
Sales
020 8995 4321

Energy Rating: C. We aim to make our particulars both accurate and reliable. However they are not guaranteed; nor do they form part of an offer or contract. If you require clarification on any points then please contact us, especially if you're traveling some distance to view. Please note that appliances and heating systems have not been tested and therefore no warranties can be given as to their good working order.

 **RICS** | Regulated
Estate Agent
and Letting Agent

dexters.co.uk