



Acton Lane, W4 £620,000

A recently refurbished top floor two bedroom split-level apartment. With open plan kitchen/reception, wood flooring, eaves for storage, long lease, park views and offered with no onward chain.

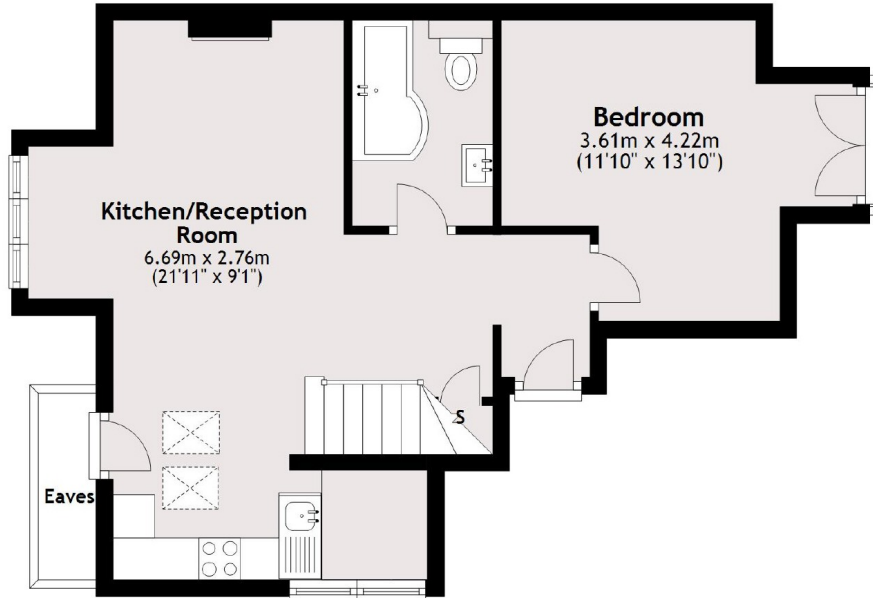
Located very close to Chiswick Park underground station and under half a mile from all the amenities Chiswick High Road has to offer.

Features

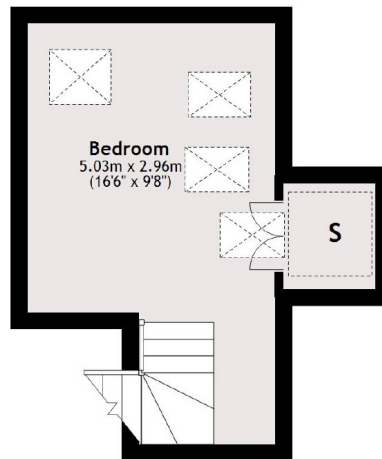
- Top Floor
- Two Bedrooms
- Recently Refurbished
- Split-Level
- Park Views

Acton Lane,
London, W4

Second Floor



Third Floor



Total area: approx. 62.0 sq. metres (667.2 sq. feet)