



Grove Park Gardens, W4 £610,000

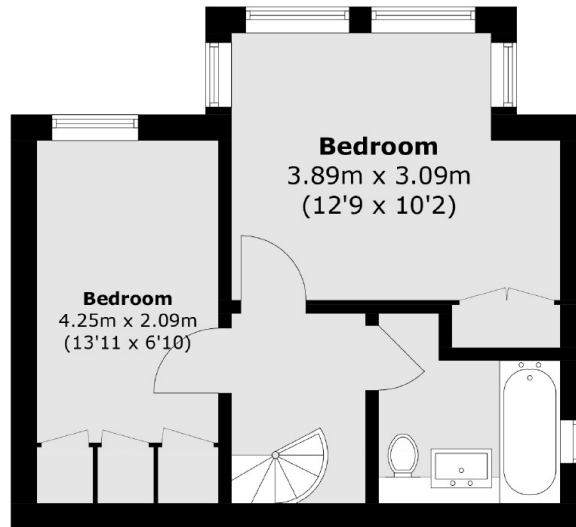
Located in the heart of Grove Park, Chiswick is this unique two bedroom split-level apartment. The property has been kept to a high standard throughout and benefits from a share of the freehold.

Grove Park Gardens is located within 500 meters of Chiswick mainline station (GWR) and just a short walk from the River Thames, Chiswick House & Grounds and Strand on the Green. Chiswick High Road and Kew are nearby and the area offers excellent schooling facilities.

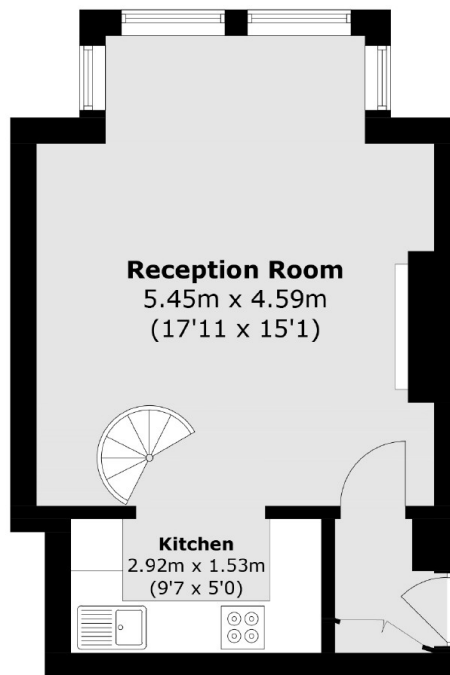
Features

Double Bay Windows
Split-Level
Two Bedrooms
Share Of Freehold
Period Conversion
Prime Grove Park

Grove Park Gardens, London, W4



First Floor



Ground Floor

Total area (approx.): 59.5 sq. m (640.4 sq. ft)